



BOLIDE

TECHNOLOGY GROUP



ISO 9001:2008
Certified

Vol. 132



Quality you can trust.



iPac IP Systems

- 5MP, 2MP, HD, IP Cameras
- NVR / Mini NVR / NVMS
- IP Decoder / IP PTZ

iPac[®]
The ease of plug and play.



P.1

Digital Video Recorders

- 4 / 8 / 16 channels 960H DVRs
- Mobile DVRs
- All-in-one DVRs



P.27

PTZ & Matrix Systems

- Pan / Tilt / Zoom Cameras
- Matrix System
- Coaxial Converters / Controllers



P.33

Security Cameras

- Tiger-i / Red-i / Eagle-i Cameras
- Effio / Effio-e / Pixim WDR Cameras
- Board Cameras / Specialty Cameras



P.45

Security Monitors

- Monitor Walls
- Security Grade Monitors



P.77

Covert Cameras

- Wifi Covert Cameras
- USB Covert Cameras
- SD Card Covert Cameras



P.80

Security Accessories

- RJ59 / Cat5-e / Cat6 Cables
- Camera Lens
- Camera Housings
- Indoor / Outdoor Scanner
- Infrared Illuminator / Baluns



P.82

Bolide Technology Group, Inc. is a world wide major manufacturer and ISO 9001:2008 certified Distributor of CCTV surveillance products and accessories. With a prestigious history of over 17 years offering high-quality, cutting edge products along with exceptional customer service, Bolide has become one of the fastest growing companies and most sought after suppliers in the industry.

Bolide Technology Group is dedicated to developing products that are distinctive and innovative, using the latest and most advanced technologies to satisfy the diverse needs of customers worldwide. To accomplish this, Bolide has created a global R&D network with operations in the United States , China , Mexico and throughout Latin America ..

Bolide provides a complete line of CCTV equipment from cameras, Digital Video Recorders, matrix systems and monitors to accessories such as cables, connectors and power supplies. Moreover, Bolide continues to add new technologies to its already extensive line of CCTV products & accessories to meet the constantly growing demand of its clients and partners around the globe. More than 95% of Bolide products are developed and manufactured by Bolide certified facilities. This enables the maintaining of strict manufacturing and quality control standards, ensuring that we meet the high levels of performance and consistency expected by Bolide customers.

From its impressive new state of art 26,000-square-foot headquarters located in Southern California and through a responsive network of sales representatives across the United States , Mexico and Latin America , Bolide offers the best valued high performance security products in the market. Our mission is to provide our partners the best selection of the highest quality products with outstanding customer service.

BOLIDE TECHNOLOGY GROUP

468 South San Dimas Ave.
San Dimas, CA 91773
Toll Free: 800-355-0895
Tel: 909-305-8889 | Fax: 909-305-0999

Email: sales@bolideco.com
Website: <http://www.bolideco.com>



**ISO 9001:2008
Certified**

www.bolideco.com

NETWORK/IP CAMERAS

iPac[®]
The ease of plug and play.



iPac
IP Systems

Digital Video
Recorders

PTZ & Matrix
Systems

Security
Cameras

Security
Monitors

Covert Cameras

Security
Accessories

iPac
IP Systems

Digital Video
Recorders

PTZ & Matrix
Systems

Security
Cameras

Security
Monitors

Covert Cameras

Security
Accessories

Bolide's Network Video solution "iPac", the first hybrid camera system to combine high density pixel resolution, local recording (SD card), Analog output, 2 way audio, POE, and a host of other features incorporated into an all in one package. Bolide's new iPac solution incorporates the best of both worlds, both analog and digital technology combined to deliver better and clearer images, better networking, advanced coding and more efficient surveillance.

iPac[®]

The ease of plug and play.



"iPac is filled with features that are designed to satisfy most of today's security surveillance requirements, at a price you would normally pay for a standard analog camera. Like a Swiss army knife, iPac was created to be the ideal solution for many application, IP or analog, it has everything you need. Designed to meet a wide range of systems requirements, the iPac line of cameras is the solution for today's most demanding application including Hospitals, Banks, Schools, Commercial chain stores, as well as restaurants and home security. iPac is available in different form factors, both IR bullet and vandal dome, mini dome, PTZ, and traditional boxed camera. Need to integrate to an existing system? No problem, iPac comes ready to integrate with Onvif protocol built in, which makes integrating to 3rd party systems simple.

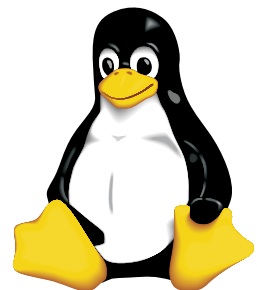
iPac[®] - Hardware

When you need 24X7 reliability, long term durability and proven technology, there is no margin for error, which is why Bolide only implements the highest quality parts to manufacture our network video systems.



Using TI DaVinci as the processing power behind iPac, we can provide the best encoding that can reach H-264 with High Profile 4.2 at up to 5 Mega Pixel Resolution.

However, a high processing DSP needs to be combined with the an equal like operating system, and the only solution to offer the best is Linux. iPac uses the current 4.2 build which allows us to rapidly develop new and exciting functions and features for our product software line-up, and ever developing software.



Open standards is the best and most flexible way to bring complex devices to talk to each other. Bolide iPac Camera are one of the early adopters for Onvif and take great steps to check and verify our devices with the world leading CMS systems. This gives customers the best choice and frees the limits of pre-open standards when new device would of required longer implementation time and developing software.

iPac® - Connectivity

iPac cameras can integrate with most 3rd party softwares, so your system is not limited. With built in Onvif protocol standard, connecting to other softwares or NVR's is easy.



iPac® - Flash Technology

iPac®

The ease of plug and play.

Flash Video is embedded inside iPac cameras.



iPac has embedded the core video streaming (RTMP) of flash video inside.

The common method for IP camera devices to write quick applications is to create an IE (Internet Explorer) Active X component. This is executed on your PC only devices from the browser. Two problems with this: Windows Only and IE only.

With built-in Flash, iPac cameras support not only Microsoft Internet Explorer, but also Fire Fox, Safari, Opera and Google Chrome. Most IP cameras in the market are limited to only using Microsoft Internet Explorer; however, iPac gives you the flexibility to use which ever browser you like best.



Internet Explorer



Google Chrome



Mozilla Firefox



Apple Safari



Opera

iPac
IP Systems

Digital Video
Recorders

PTZ & Matrix
Systems

Security
Cameras

Security
Monitors

Covert Cameras

Security
Accessories

iPac® - Pixel Density "Size does matter"

iPac®

The ease of plug and play.

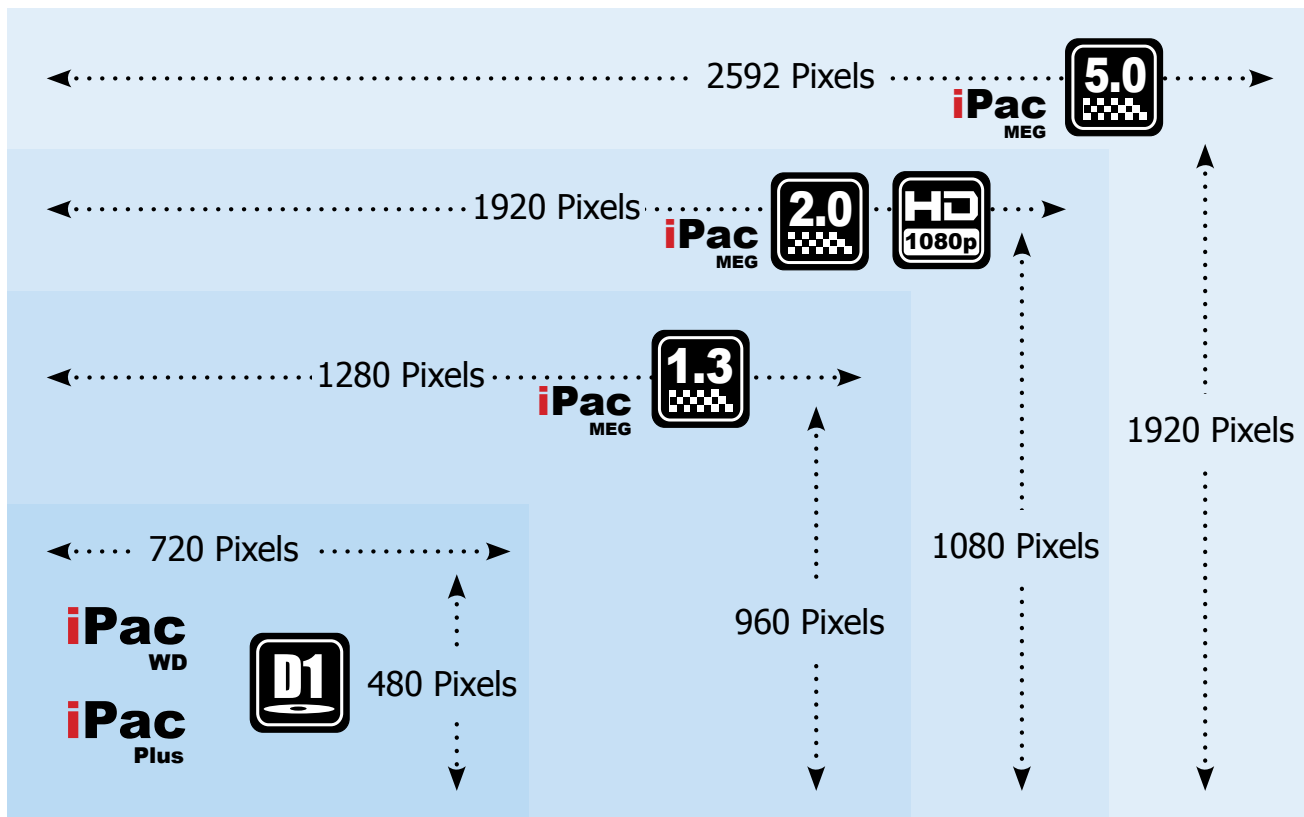


iPac offers different choices in resolution / pixel density for your applications...

IP cameras require advanced high speed processing, not only for encoding but also to obtain high quality video streams, picture exposure, shutter control and white balance. Whether it be VGA, HD, FULL HD, or 5 Mega Pixels, you can count on iPAC delivering crisp, real time images.

The image below gives you an idea of resolution scale between VGA and 5.0 Megapixel. Notice how a VGA resolution is only 1/16 the size of 5.0 Megapixel. Also, notice the difference in aspect ratio between resolutions. Where CCTV historically has been at a 5:4 ration, HD is now a 16:9 ratio which is now the common monitor display aspect. CRT monitors pass on to be obsolete in a new digital world.

The image below gives you an idea of resolution scale between VGA and 5.0 Mega pixel resolution. Notice how a VGA image is only 1/16 the size of 5.0 Mega Pixel.



iPac® Series - iPac Meg, iPac WD, iPac Plus

iPac
IP Systems

Digital Video
Recorders

PTZ & Matrix
Systems

Security
Cameras

Security
Monitors

Covert Cameras

Security
Accessories

iPac MEG



- MegaPixel Series
- High Resolution CMOS/CCD MegaPixel Sensor
- Available in 1.3 MP CCD, 2MP HD and 5 MP HD
- Day/night functionality
- Built-in IR Cut-filter (Box model only)
- 3 Streaming Selectable Profile



iPac WD



- Wide Dynamic Range
- Maximum Resolution: 720 x 480 D1
- VBR 40-6000 kbps
- Powered by Pixim Seawolf CCD



iPac Plus



- High Resolution Series
- Maximum Resolution: 720 x 480 D1
- VBR 40-6000 kbps
- Day/night functionality
- Built-in Sony Effio-e DSP



iPac® - Pixel.

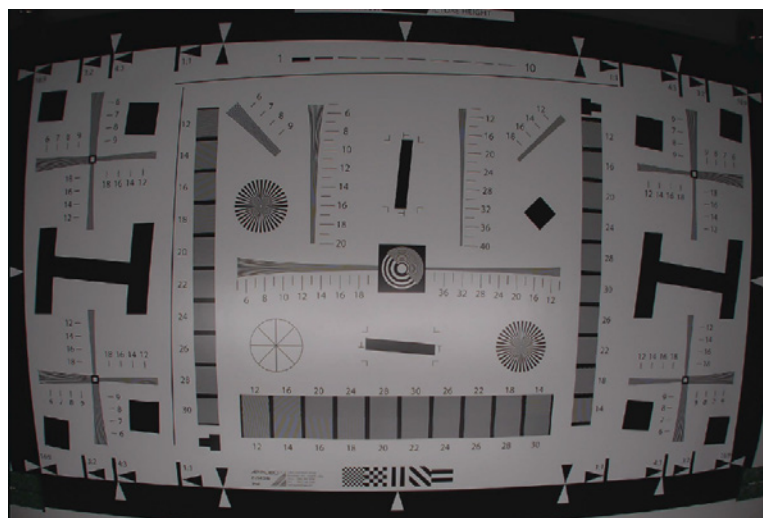
iPac®

The ease of plug and play.

iPac - Pixel that you can identify.

With any IP camera more pixels does not equal high quality images. At Bolide we use the best available methods to measure and benchmark our products. This is done by using a public software application HYRES program designed to measure against the standard ISO 12233 resolution chart. There is no subjective thinking, the process is logical software processing the image captures and giving a valued result. Many factors can make an image look nice visually with noise reduction anti-aliasing, and other such tricks that can be employed to make you think you are getting high quality images. But definition to the pixel indicates a true performance and high quality technology, and not just offering a large pixel size.

This image is a sample capture from the ISO 12233 chart. This is a copy-right chart and not for public domain. This image captures the entire area and we do not crop the edges which would give an otherwise false reading.



iPac® - Selection

iPac®

The ease of plug and play.

iPac cameras are available in different form factors to cover an extensive range of applications. From mini vandal dome cameras, PTZ's, IR bullet to encoders and decoders that allow you to integrate an existing analog camera to an iPAC system. With our wide range of options you can be certain that we can meet your needs, whether it be indoor or outdoor, wired or wireless, or harsh environments, we got you covered.

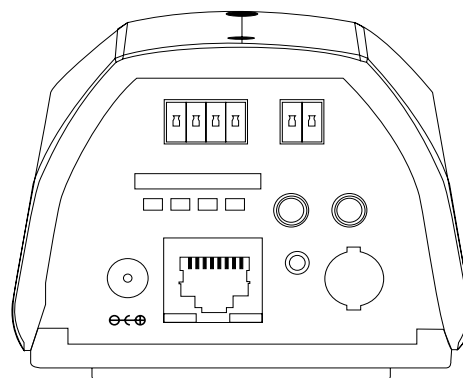


iPac® - Exclusive features & functions

Most of our iPac cameras come with built in features and functions exclusive to the iPac family of products.

Standard exclusive features & functions:

- Alarm in/out
- BNC output
- POE ready
- SD card slot for local recording (up to 64GB)
- RS485
- Audio in/out



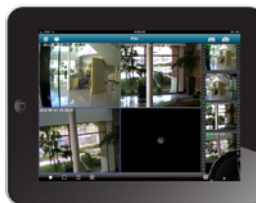
iPac® App - Available in App Store & Google play



iPac supports the latest smart devices using iOS and Android for remote monitoring. Using the latest in technology you can monitor your cameras from anywhere anytime. Simply download the iPAC app available in the Apple App store or Google play and you are ready to go.

App Features:

- Real-time video/audio monitoring
- Live video snapshot
- Intuitive control for PTZ operation
- Auto-sniff camera search on LAN
- Complete remote configuration



Available on the
App Store



ANDROID APP ON
Google play

iPac® - Network System

iPac - Digital Solution

- Auto Sniff -easy auto detection of IP devices
- Multi-Monitor display output up to four monitors
- Remote PTZ Camera Control
- Record constant, Alarm and Motion detection
- Centralized management of devices.
- Monitoring. Mega pixel or Standard resolution IP devices
- Manual, Event-driven, and Scheduled
- Audio Monitoring / Two way audio
- Playback the current recordings (Local HDD/NAS/FTP)
- Playback from sd memory card on device
- Playback up to 16 devices at same time

iPac®

The ease of plug and play.

iPac
IP Systems

Digital Video
Recorders

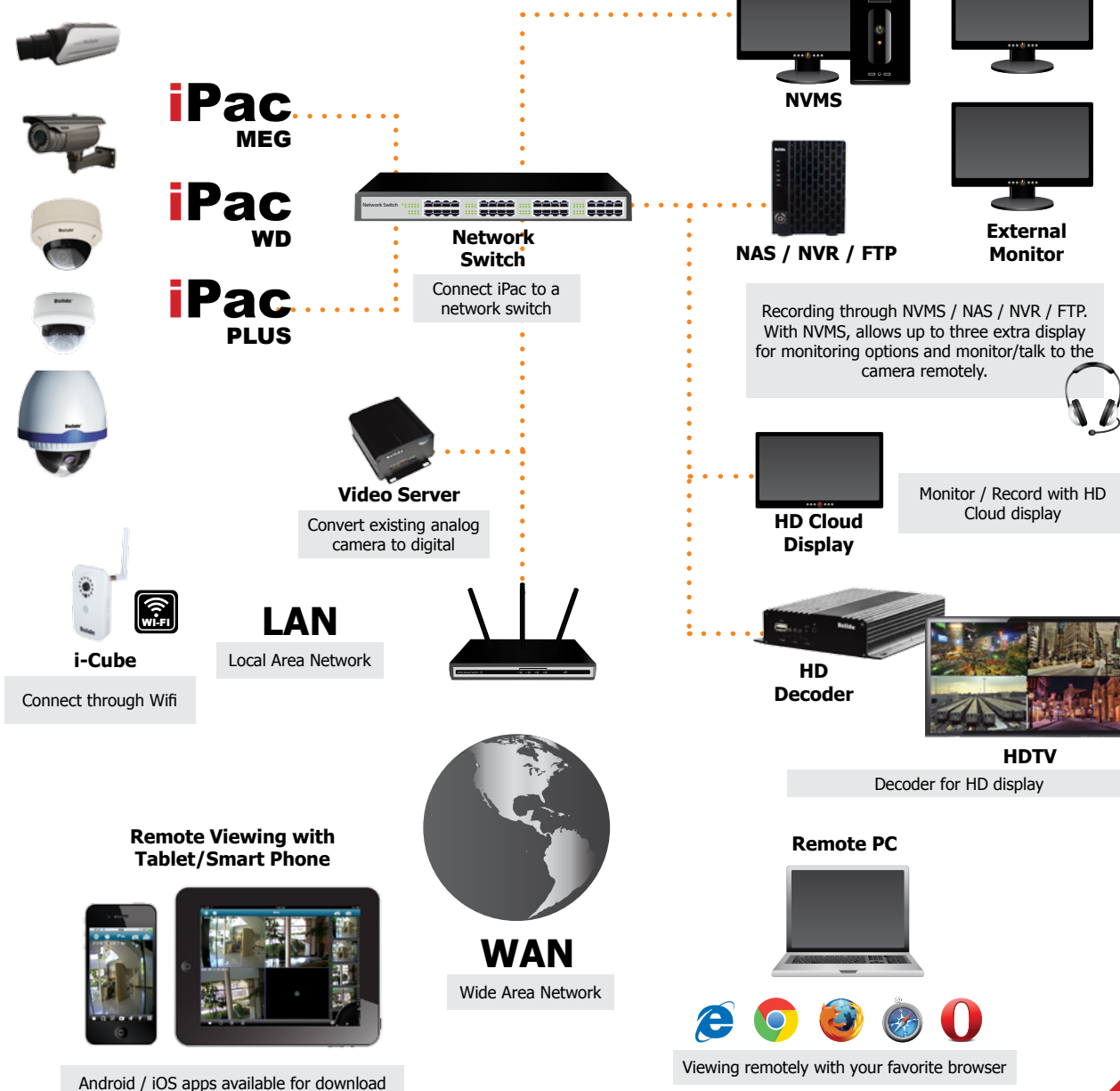
PTZ & Matrix
Systems

Security
Cameras

Security
Monitors

Covert Cameras

Security
Accessories



iPac® - Free Network Video Management Software (NVMS)

Network Video Management Software (NVMS)

Features:

- Simultaneously Real-time 36-channels, up to 128ch
- Compatible with iPac cameras and Bolide DVRs
- Manual, Event-driven and Scheduled Record
- Easy auto detection of IP devices (LAN)
- iPac Cameras / DVS (Video Servers)
- Audio Monitoring / Two way talk back
- Easy to use search and playback
- Playback up to 16 devices at same time

Minimum Specifications Requirements:

OS Requirement	Windows XP or later
System Memory	2GB
HDD	250GB
Graphic Memory	Nvidia or ATI 256MB
Compression	H.264
Record Resolution	Mega Pixel 1280 x 960 @ 22fps
Playback	Local or Remote SD Search
Record Mode	Schedule, Motion, Time
PTZ Control	Supported
Audio	2-way communication
Live View	36 Max.
Max Cameras Supported	128



iPac® - HD Cloud Display

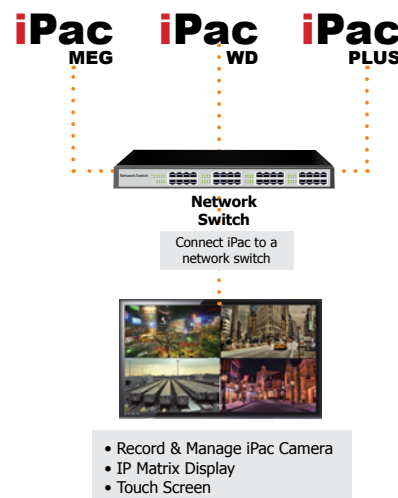
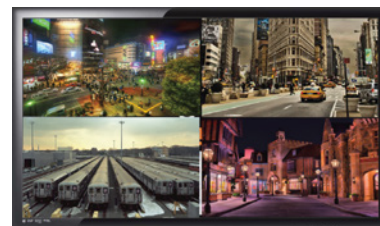
IP HD Cloud Control Monitor with Touch Display

Features:

- Cloud Monitoring Platform
- IP Virtual Matrix
- Multi-image Display
- Display IP camera support: D1, 720p, 1080p
- Support ONVIF & PSIA
- Support Multi-coding: H.264, MPEG4, MJPEG
- Built-in NVR and Single Touch Screen System

Specifications:

Model Number	BN-LCD22	BN-LCD46
Display Panel	22 inch 16:9 TFT/LCD	46 inch 16:9 TFT/LCD
Resolution	1920 x 1080	
VGA	1 Channel VGA Input	
Ethernet	1 x 10/100 Network Interface	
USB	2 x USB 2.0	
HDD	1 x SATA 2.0	
Power	AC 100~230v 50/60Hz	
Power Consumption	45W	260W
Dimension	522 x 322 x 60	1116 x 670 x 126
Weight	16.5 lbs	68 lbs
Video System	Worldwide System	
Brightness	450cd/m	500cd/m
Contrast	1000:1	3000:1
Respond Time	5ms	8ms
Viewing Angle	160°,170°	178°,178°
Working Environment	Temperature: 14°F - 131°F, Humidity: 10% - 85% Max.	

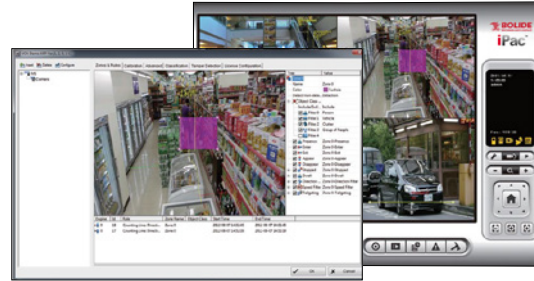


iPac® - Intelligent Video Software

Bring iPac Cameras to the next level

Features:

- Compatible with iPac cameras and ONVIF cameras
- Record on IVS
- Recording transcode
- Supports 8 instant responses
- Intelligent event search with video
- Scalable and Flexible
- Low CPU consumption
- Self-learning algorithm automatically adapts to environment changes
- Tracks up to 100 targets and has 40 detection zones per camera
- Intuitive and unique 3D grid calibration
- Robust tracking – continues to track stopped and slow moving objects
- Ignores repetitive movement such as swaying trees



iPac®
The ease of plug and play.

iPac
IP Systems

Digital Video
Recorders

PTZ & Matrix
Systems

Security
Cameras

Security
Monitors

Covert Cameras

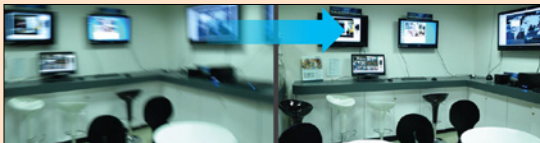
Security
Accessories

Features Highlights



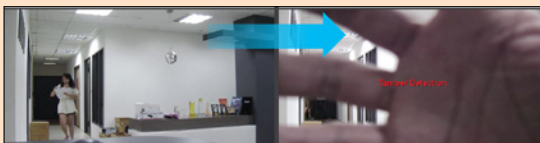
People Counting

This counting solution includes a bi-directional line-crossing filter, suitable for counting people in busy doorways and entrances.



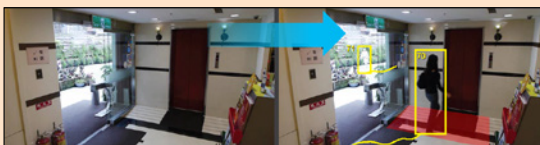
Stabilizer

In environments where camera stability is an issue, this feature will compensate for any movement to provide a clear view.



Tamper Detection

Detects any event that significantly changes the field of view of the camera, such as loss focus, a camera being covered up...etc.



Appear and Disappear

Used to detect people appearing or disappearing through a doorway but ignores people passing by in front of the doorway.



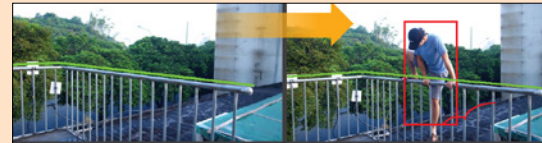
Dwell

Objects that dwell inside a zone for longer than the predefined amount of time will trigger an alarm such as loitering people.



Vehicle Counting

This counting solution captures statistics on vehicle flow, it also provides an estimated speed of the vehicle.



Presence Filter

(Tripwire) Detects when an object or individual has penetrated the defined perimeter.



Enter and exit

An alarm is triggered when an object crosses from the outside to the inside of a detection zone.



Stopping

Objects that are stopped inside a zone for longer than the defined amount of time will trigger an alarm.



Direction

Objects that travel in the configured direction (within the limits of the acceptance angle) through a zone or over a line trigger an alarm.

iPac 5.0 Mega Pixel Cameras

iPac
MEG 

iPac 5.0 Mega Pixel Cameras features Aptina CMOS imaging technology, which delivers excellent pixel performance, sensor functionality and camera system capability to a world going visual. With Aptina's high-quality imaging portfolio, iPac cameras can deliver new faster and better images ever.

Features:

- 1/2.5" Aptina CMOS
- H.264 video compression
- Supports Multi-stream
- Mechanical Day/Night Function
- 5 mega pixel resolution (2592 x 1920)
- Two-way communication
- Built-in micro SD Card
- Onvif v2.2 (Profile S)



BN5002M5

iPac Series 5.0 Mega Pixel Box Camera

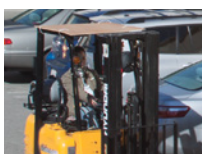
 **ONVIF**



5 Mega Pixel



200% Zoom



500% Zoom



BN5009M5

iPac Series 5.0 Mega Pixel Vandal Proof IR Dome Camera



BN5035M5

iPac Series 5.0 Mega Pixel Bullet Camera

Specifications:

Model Number	BN5002M5	BN5009M5	BN5035M5
			
Camera			
Image Sensor	Aptina 1/2.5" CMOS		
Resolution	2592 X 1920 10fps		
Minimum Illumination	0.5Lux@ F1.2, 0 Lux LED On		
IR LEDs	N/A	12pcs 850nm, 65-82ft	14 LEDs & 2 High Power LED, 100-130ft
Day/Night	True Day & Night with ICR Filter		
Electronic Shutter	Auto/User 1/5 - 1/50,000; 50/60Hz software selectable		
Video Output	BNC 75 Ohm, Digital out		
Lens	C/CS Mount	3.3 -12mm Vari-focal IR Corrected DC Auto IRIS	3.3 -12mm Vari-focal IR Corrected DC Auto IRIS
Video			
Compression	H-264 High Profile (Support Baseline Profile) /a MJPEG		
Bitrate (CBR/VBR)	Stream1 50Kbps - 12Mbps Stream2 10Kbps - 6Mbps Stream3 (MJPEG Fixed)		
Streaming Quality	1-9		
Multi-Streaming	Three simultaneous streams, two with H-264, one with MJPEG Stream		
Brightness / Sharpness	Variable 0~100		
Gain Control	Auto / Fixed 8~102db		
Orientation	Horizontal Mirror / Vertical Flip		
Text Overlay	Time / Date / Camera / Custom OSD		
Masking	3 user defined masking areas		
Network			
Network Interface	RJ-45,10/100Base-t, IPV4/IPV6		
Network Protocols	HTTP, TCP/IP, UDP/IP, RTSP, FTP, DHCP, NTP, PPoE, NTP Unicast and Multicast supported		
Recording Simultaneous	Micro SD/HCSd, Remote FTP, TCP/UDP CMS, RTSP		
Compliance	Onvif v2.2 (Profile S)		
RTSP Video	Standard RFC2326, Support Quicktime / VLC Player		
Alarm/PTZ Control	Alarm 1 in/1 out, RS485		
Audio Input/Output	1/1		
Audio Compression	G711 A-Law, G711 U-Law, RAW_PCM		
General			
Operating Temperature	14°F ~ 131°F		
Operating Humidity	10% - 85% Max.		
Input Voltage	DC12V/PoE Class 3		
Dimensions	141x78x65mm	112 x ø130mm (IP66)	377 x ø110mm (IP66)
Weight	3.63lbs	1.87lb	3.63lbs

iPac 2.0 Mega Pixel Cameras

iPac
MEG 

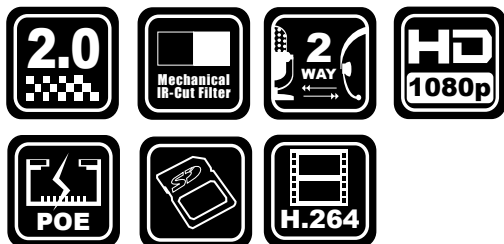
iPac 2.0 Mega Pixel Cameras feature Sony Exmor™ High Speed CMOS imaging technology, which combines high-sensitivity with low noise, and creates images containing more detail than ever before. Sony Exmor™ combines the speed of the CMOS sensor with advanced-quality image sensor technologies accumulated through the

development of CCDs. iPac 2.0 Mega Pixel Cameras take advantages of this technology which allows better images and enhanced image quality to meet today's standard. iPac 2.0 Mega Pixel also meets 1080p for HD Display.



Features:

- Sony Exmor™ 1/2.8"
- H.264 video compression
- Supports Multi-stream
- Mechanical Day/Night Function
- 2 mega pixel resolution (1920x1080)
- Two-way communication
- Support multi-streaming
- Built-in micro SD Card
- Onvif v2.2 (Profile S)



2 Mega Pixel



200% Zoom



500% Zoom



BN5002M2

iPac Series 2.0 Mega Pixel Box Camera



BN5009M2

iPac Series 2.0 Mega Pixel Vandal Proof Dome Camera



BN5009M2M


iPac Series 2.0 Mega Pixel Vandal Proof Mini Dome Camera



BN5035M2

iPac Series 2.0 Mega Pixel Bullet Camera

Specifications:

Model Number	BN5002M2	BN5009M2	BN5009M2M	BN5035M2
				
Camera				
Image Sensor	Sony Exmor™ 1/2.8"			
Resolution	1920 x 1080 /30fps			
Minimum Illumination	0.1 Lux@ F1.2	0 Lux (IR On)	0 Lux (IR On)	0 Lux (IR On)
IR LEDs	N/A	12pcs 850nm, 65-82ft	1pcs 850nm, 20ft	8 LEDs & 2 High Power LED, 65-82ft
Day/Night	True Day & Night with ICR Filter			
Electronic Shutter	Auto/User 1/5 - 1/50,000; 50/60Hz software selectable			
Video Output	BNC 75 Ohm, Digital out			
Lens	N/A	3.3 - 12mm Vari-focal IR Corrected DC Auto IRIS	3.6mm Mega Pixel	3.3 -12mm Vari-focal IR Corrected DC Auto IRIS
Video				
Compression	H-264 High Profile (Support Baseline Profile) /a MJPEG			
Bitrate (CBR/VBR)	Stream1 50Kbps - 12Mbps Stream2 10Kbps - 6Mbps Stream3 (MJPEG Fixed)			
Streaming Quality	1-9			
Multi-Streaming	Three simultaneous streams, two with H-264, one with MJPEG Stream			
Brightness / Sharpness	Variable 0~100			
Gain Control	Auto / Fixed 8~102db			
Orientation	Horizontal Mirror / Vertical Flip			
Text Overlay	Time / Date / Camera / Custom OSD			
Masking	3 user defined masking areas			
Network				
Network Interface	RJ-45,10/100Base-t, IPV4/IPV6			
Network Protocols	HTTP, TCP/IP, UDP/IP, RTSP, FTP, DHCP, NTP, PPoE, NTP Unicast and Multicast supported			
Recording Simultaneous	Micro SD/HCS, Remote FTP, TCP/UDP CMS, RTSP			
Compliance	Onvif v2.2 (Profile S)			
RTSP Video	Standard RFC2326, Support Quicktime / VLC Player			
Alarm/PTZ Control	Alarm 1 in/1 out, RS485			
Audio Input/Output	1/1			
Audio Compression	G711 A-Law, G711 U-Law, RAW_PCM			
General				
Operating Temperature	14°F ~ 131°F			
Operating Humidity	10% - 85% Max.			
Input Voltage	DC12V/PoE Class 3			
Dimensions	141x78x65mm	112 x ø130mm (IP66)	53mm x ø100mm (IP66)	264mm x ø83mm (IP66)
Weight	3.63lb	1.87lb	0.66lb	1.8lb

iPac 1.3 Mega Pixel Cameras

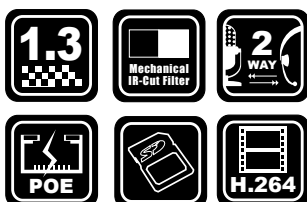
iPac
MEG 

iPac 1.3 Mega Pixel Cameras feature Advanced Exview 1.3 Mega Pixel CCD. iPac 1.3 Mega Pixel series is a superior Megapixel solution with H.264 compression network camera that built-in tons of features such as SD card slot, POE, mechanical IR and two-way communication. With the latest H.264 compression, it provides low bandwidth streaming and reduced storage without compromising in image quality. Mechanical IR cut filter function allows the camera to operate effectively in low light environment or even in total darkness for 24-hour surveillance.

Features:

- 1/3" Exview 1.3 Mega Pixel CCD
- H.264 video compression
- Supports Multi-stream
- Mechanical Day/Night Function
- 1.3 mega pixel resolution (1280 x 960)
- Two-way communication
- Support multi-streaming
- Built-in mini SD Card

 **ONVIF**



1.3 Mega Pixel



200% Zoom



500% Zoom



BN5002M-A

iPac Series 1.3 Mega Pixel Box Camera



BN5009M-A

iPac Series 1.3 Mega Pixel
Vandal Proof Dome Camera



BN5035M

iPac Series 1.3 Mega Pixel Bullet Camera

Specifications:

Model Number	BN5002M-A	BN5009M-A	BN5035M
			
Camera			
Image Sensor	1/3" Exview 1.3 Mega Pixel CCD		
Resolution	1280 x 920 /22fps		
Minimum Illumination	0.02 Lux@ F1.2	0.02 Lux@ F1.2	0 Lux (IR On)
IR LEDs	N/A	N/A	12pcs 850nm, 65-82ft
Day/Night	True Day & Night with ICR Filter		
Electronic Shutter	Auto/User 1/5 - 1/50,000; 50/60Hz software selectable		
Video Output	BNC 75 Ohm, Digital out		
Lens	N/A	4-9mm	4-9mm
Video			
Compression	H-264 High Profile (Support Baseline Profile) /a MJPEG		
Bitrate (CBR/VBR)	Stream1 50Kbps - 12Mbps Stream2 10Kbps - 6Mbps Stream3 (MJPEG Fixed)		
Streaming Quality	1-9		
Multi-Streaming	Three simultaneous streams, two with H-264, one with MJPEG Stream		
Brightness / Sharpness	Variable 0~100		
Gain Control	Auto / Fixed 8~102db		
Orientation	Horizontal Mirror / Vertical Flip		
Text Overlay	Time / Date / Camera / Custom OSD		
Masking	3 user defined masking areas		
Network			
Network Interface	RJ-45,10/100Base-t, IPV4/IPV6		
Network Protocols	HTTP, TCP/IP, UDP/IP, RTSP, FTP, DHCP, NTP, PPoE, NTP Unicast and Multicast supported		
Recording Simultaneous	Mini SD/HCS, Remote FTP, TCP/UDP CMS, RTSP		
Compliance	Onvif v2.2 (Profile S)		
RTSP Video	Standard RFC2326, Support Quicktime / VLC Player		
Alarm/PTZ Control	Alarm 1 in/1 out, RS485		
Audio Input/Output	1/1		
Audio Compression	G711 A-Law, G711 U-Law, RAW_PCM		
General			
Operating Temperature	14°F ~ 131°F		
Operating Humidity	10% - 85% Max.		
Input Voltage	DC12V/PoE Class 3		
Dimensions	141 x 78 x 65mm	ø130mm x 112mm (IP66)	ø130mm x 112mm (IP66)
Weight	3.63lb	1.87lb	1.87lb

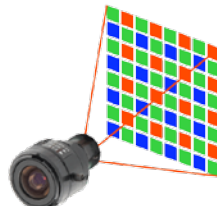
iPac WDR series Pixim DPS cameras



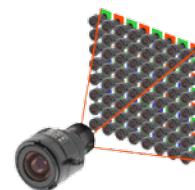
iPac WD Cameras incorporate Pixim DPS technology and the Seawolf and Nightwolf DSP. Global Electronic Shutter, Progressive Scan, and full D1 resolution are just some of the many benefits and exclusive features of iPac WD with Pixim DPS technology. Ideal color imaging for common lighting challenges - Dark, Mixed, Bright, Indoor.

Features:

- 1/3" Pixim DPS, Seawolf
- Global Electronic Shutter
 - Reduces motion artifacts
- H.264 Video Compression
- Multi Stream
- Dynamic Range > 120db
- 2 way Audio
- SD card



Typical Analog Sensor
Compromises Exposure



DPS - Optimizes
Exposure



BN2002WDRIP

iPac Series WDR Box Camera



BN2009WDRVAIRIP

iPac Series WDR
Vandal Proof Dome Camera



BN2035WDRIRIP

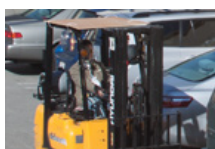
iPac Series WDR Bullet Camera



D1 Resolution



200% Zoom



500% Zoom

Specifications:

Model Number	BN2002WDRIP	BN2009WDRVAIRIP	BN2035WDRIRIP
<div></div>			
Camera			
Image Sensor	1/3" Pixim DPS		
Digital Signal Processor	Seawolf		
Resolution	D1/30fps,CIF/30fps,QCIF/30fps		
Minimum Illumination	0.1Lux@ F1.2	0 Lux (IR On)	0 Lux (IR On)
IR LEDs	N/A	12pcs 850nm, 65-82ft	12pcs 850nm, 65-82ft
Electronic Shutter	Auto/User 1/5 - 1/50,0000		
Video Output	BNC 75 Ohm, Digital out		
Lens	N/A	2.8-10mm	2.8-10mm
Video			
Compression	H-264 High Profile (Support Baseline Profile) /a MJPEG		
Bitrate (CBR/VBR)	Stream1 50Kbps - 12Mbps Stream2 10Kbps - 6Mbps Stream3 (MJPEG Fixed)		
Streaming Quality	1-9		
Multi-Streaming	Three simultaneous streams, two with H-264, one with MJPEG Stream		
Brightness / Sharpness	Variable 0~100		
Gain Control	Auto / Fixed 8~102db		
Orientation	Horizontal Mirror / Vertical Flip		
Text Overlay	Time / Date / Camera / Custom OSD		
Masking	3 user defined masking areas		
Network			
Network Interface	RJ-45,10/100Base-t, IPV4/IPV6		
Network Protocols	HTTP, TCP/IP, UDP/IP, RTSP, FTP, DHCP, NTP, PPoE, NTP Unicast and Multicast supported		
Recording Simultaneous	Mini SD/HCSd, Remote FTP, TCP/UDP CMS, RTSP		
Compliance	Onvif v2.2 (Profile S)		
RTSP Video	Standard RFC2326, Support Quicktime / VLC Player		
Alarm/PTZ Control	Alarm 1 in/1 out, RS485		
Audio Input/Output	1/1		
Audio Compression	G711 A-Law, G711 U-Law, RAW_PCM		
General			
Operating Temperature	14°F ~ 131°F		
Operating Humidity	10% - 85% Max.		
Input Voltage	DC12V/PoE Class 3		
Dimensions	141 x 78 x 65mm	ø130mm x 112mm (IP66)	141 x 78 x 65mm (IP66)
Weight	3.63lb	1.87lb	1.87lb

iPac Plus series Effio-e Cameras

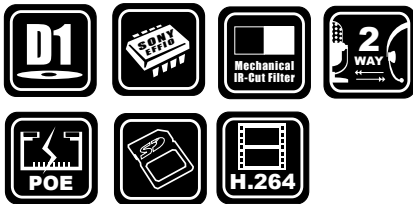
**iPac
Plus**



iPac Plus Cameras feature Sony Effio-e, which has useful features like high color reproduction, high S/N ratio, and high resolution. With Effio-e DPS, iPac Plus Cameras are able to capture crystal-clear surveillance videos, and have higher sensitivity when compared to traditional CCTV cameras, with its 960H CCD image sensor. Like all other iPac series camera, iPac Plus also include all standard features such as two-way audio communication, POE, SD card slot, alarm in/out and the latest H.264 compression which provides low bandwidth streaming and reduced storage without compromising in image quality.

Features:

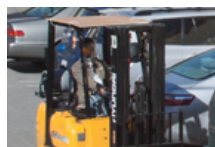
- 1/3" Sony CCD, Sony Effio-e
- Effio-e for advance image processing
- H.264 video compression
- D1 30fps real time recording
- Multi-Streaming CBR/VBR
- Two-way audio communication
- Audio compression: G711
- Built-in Mini SD Card slot



D1 Resolution



200% Zoom



500% Zoom



BN2002IP

iPac Plus Series Box Camera



BN2009IRIP

iPac Plus Series Indoor IR Dome Camera



BN2009AVAIRIP





iPac Plus Series Vandal Proof Outdoor IR Dome Camera



BN2035IRIP

iPac Plus Series Outdoor Bullet Camera

Specifications:

Model Number	BN2002IP	BN2009IRIP	BN2009AVAIRIP	BN2035IRIP
				
Camera				
Image Sensor	1/3" Sony CCD			
Digital Signal Processor	New Sony Effio-e			
Resolution	D1/30fps,CIF/30fps,QCIF/30fps			
Minimum Illumination	0.1 Lux@ F1.2	0 Lux (IR On)	0 Lux (IR On)	0 Lux (IR On)
IR LEDs	N/A	12pcs 850nm, 65-82ft	12pcs 850nm, 65-82ft	12pcs 850nm, 65-82ft
Day/Night	True Day & Night with ICR Filter			
Electronic Shutter	Auto/User 1/5 - 1/50,000; 50/60Hz software selectable			
Video Output	BNC 75 Ohm, Digital out			
Lens	N/A	2.8 - 10mm	2.8 - 10mm	2.8 - 10mm
Video				
Compression	H-264 High Profile (Support Baseline Profile) /a MJPEG			
Bitrate (CBR/VBR)	Stream1 50Kbps - 12Mbps Stream2 10Kbps - 6Mbps Stream3 (MJPEG Fixed)			
Streaming Quality	1-9			
Multi-Streaming	Three simultaneous streams, two with H-264, one with MJPEG Stream			
Brightness / Sharpness	Variable 0~100			
Gain Control	Auto / Fixed 8~102db			
Orientation	Horizontal Mirror / Vertical Flip			
Text Overlay	Time / Date / Camera / Custom OSD			
Masking	3 user defined masking areas			
Network				
Network Interface	RJ-45,10/100Base-t, IPV4/IPV6			
Network Protocols	HTTP, TCP/IP, UDP/IP, RTSP, FTP, DHCP, NTP, PPoE, NTP Unicast and Multicast supported			
Recording Simultaneous	Micro SD/HCSd, Remote FTP, TCP/UDP CMS, RTSP			
Compliance	Onvif v2.2 (Profile S)			
RTSP Video	Standard RFC2326, Support Quicktime / VLC Player			
Alarm/PTZ Control	Alarm 1 in/1 out, RS485			
Audio Input/Output	1/1			
Audio Compression	G711 A-Law, G711 U-Law, RAW_PCM			
General				
Operating Temperature	14°F ~ 131°F			
Operating Humidity	10% - 85% Max.			
Input Voltage	DC12V/PoE Class 3			
Dimensions	141x78x65mm	112 x ø130mm	53mm x ø100mm (IP66)	264mm x ø83mm (IP66)
Weight	3.63lb	1.87lb	0.66lb	1.8lb

BN1009M/PTZ22

iPac Series 2 Mega Pixel 22x Zoom PTZ Camera

Features:

- 1/4" CMOS Sensor
- H.264 video compression, supports Multi-stream
- 255 Preset Points
- 22x Optical Zoom
- Audio compression: G723.1/6.3kbps
- High resolution 1920 x 1080 @22fps progressive scan
- RS-485 for external device control (Pan/Tilt/Zoom)
- Built-in web server and network interface
- IP66 protective housing, 2 Alarm input

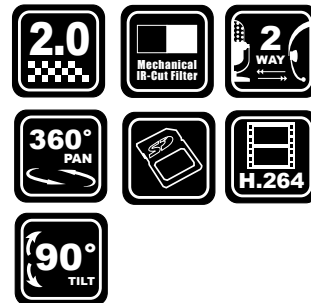
Specifications:

Camera	
Image Sensor	1/4" CMOS Sensor
Resolution	1920 X 1080 30fps
Angle of View	55°-2.9°
PTZ Speed	Pan 0.01 °~360/s, Tilt 0.01 °~360/s
Day/Night	True Day & Night with ICR Filter
Preset	255
Patterns	6
Tours	12
Alarm In/Out	2 in / 1 out
Control	Onvif / RS485
Video Output	BNC 75 Ohm, Digital out
Video	
Compression	H-264 High Profile (Support Baseline Profile) /a MJPEG
Bitrate (CBR/VBR)	Stream1 50Kbps - 12Mbps Stream2 10Kbps - 6Mbps Stream3 (MJPEG Fixed)
Streaming Quality	1-9
Multi-Streaming	Three simultaneous streams, two with H-264, one with MJPEG Stream
Brightness / Sharpness	Variable 0~100
Gain Control	Auto / Fixed 8~102db
Orientation	Horizontal Mirror / Vertical Flip
Text Overlay	Time / Date / Camera / Custom OSD
Masking	3 user defined masking areas
Network	
Network Interface	RJ-45,10/100Base-t, IPV4/IPV6
Network Protocols	HTTP, TCP/IP, UDP/IP, RTSP, FTP, DHCP, NTP, PPoE, NTP Unicast and Multicast supported
Recording Simultaneous	Micro SD/HCSD, Remote FTP, TCP/UDP CMS, RTSP
Compliance	Onvif v2.2 (Profile S)
RTSP Video	Standard RFC2326, Support Quicktime / VLC Player
Alarm/PTZ Control	Alarm 1 in/1 out, RS485
Audio Input/Output	1/1
Audio Compression	G711 A-Law, G711 U-Law, RAW_PCM
General	
Operating Temperature	14°F ~ 131°F
Operating Humidity	10% - 85% Max.
Input Voltage	24V AC (Local plug adapter supplied) /30W (Max)
Housing	IP66
Weight	9.9lb



iPac
MEG

ONVIF



BN1009/PTZ3GIP

iPac Series IP Pan-Tilt-Zoom Camera

Features:

- 1/4" Sony Ex-View HAD CCD
- H.264 video compression
- D1 704 x 480 @ 30fps
- 560x Zoom (35x Optical, 16x Digital)
- Built-in web server and network interface
- CBR/VBR transmission rate
- 360° continuous pan
- 90° Tilt with Auto flip

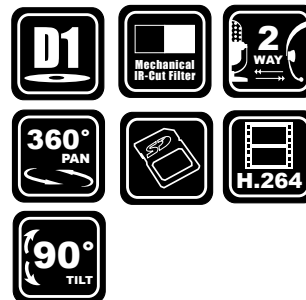
Specifications:

Camera	
Image Sensor	1/4" Sony Ex-View HAD CCD
Sync System	Internal/External (Line Lock)
Resolution	560TVL
Minimum Illumination	0.01 lux (Mono), 0.5 lux (Color)
S/N Ratio	more than 50dB
White Balance	Auto/Manual
BLC	On/Off
Aperture (F)	F1.6 ~ F4.2
Focal Length	F=3.6~126mm
Pan/Tilt Speed	0.5° ~ 160°/s
Preset Speed	> 300° /s
Rotation	Pan 360°, Tilt 0°~90°
Auto Flip	Rotates 180° at the bottom
Zoom Speed	5s/8s (Wide/Tele)
Video	
Compression	H.264, MJPEG
Encode Speed	20Kbps-12Mbps
Encode Resolution	510 x 494 D1@30fps
Stream Range	VBR/CBR 5kb - 2M
Interfaces	
Alarm Input/Output	1/1
Network Interface	RJ-45, 10/100Base-t
Network Protocols	RTP/RTCP, TCP/UDP, IPv4/v6, HTTP, DHCP, PPPoE, DDNS
SD Card	Mini SD
Audio Input/Output	1/1
Environmental	
Operating Temperature	-40°F ~ 140°F
Operating Humidity	0~95%
Electrical	
Input Voltage	DC24V
Power consumption	55W
Mechanical	
Weight	5.6lbs



**iPac
Plus**

ONVIF





BN1008

iCube Wifi PIR Network IR Camera

Features:

- 1/4" Progressive Scan CMOS
- H.264 video compression
- 1280 x 720 @ 30fps
- Built-in wifi and Bolide DDNS
- PIR for accurate motion detection
- CBR/VBR transmission rate
- IR Leds for 24/7 operation
- IR cut filter built-in



Specifications:

Camera

Sensor/DSP	1/4" Progressive Scan CMOS
Day/Night	ICR
Min. Illumination	0.1lux @F1.2,AGC on,0 lux with IR on
Lens	3.6mm 3.0MP Fixed Lens
IR LED	12 LEDs
IR Distance	5~8m
Electronic Shutter	1/20~1/30000s

Video

Compression	H.264/MPEG4/M-JPEG
Image Resolution	1280 x 720
Frame Rate	30fps(1280 x 720)
Bit Rate	Stream 1: 1000~6000kps Stream 2: 512~2048kbps Stream 3: 64~256kbps

Audio Compression

G.711

Network

Protocol	TCP/IP, HTTP, DHCP, Bolide DDNS, RTP, RTSP, PPPoE, SMTP, NTP, SNMP, FTP, UPNP
Compliance	ONVIF 2.1(1.02 backward compatible)
PC Client and Browser	ISS, IE6.0 and above
Mobile phone	iOS, Android
WIFI	YES, WEP/WPA/WPA2

Interface

Audio Input	1 CH 3.5mm audio interface, MIC IN/LINE IN
Audio Output	1 CH 3.5mm audio interface
Alarm Input	1
Alarm Output	1
LAN	1 RJ45 10M / 100M Ethernet port
RS-485	1
Storage Interface	Built-in micro sd slot, up to 32GB
PIR	YES

General

Working Temperature	-4°F ~ 140°F
Working Humidity	0% - 90%
Power Supply	12 VDC, less than 5W
Dimensions	120*79*38mm
Weight	500g



- 1 Wifi Antenna
- 2 Alarm in/out
- 3 10/100 Network port
- 4 High Power Leds
- 5 3.5mm audio interface
- 6 SD card slot for recording
- 7 PIR with motion alarm



**PIR alarm goes off instantly
when motion is detected.
Great for alarm verification.**

BN-NVR/N4/N8/N16

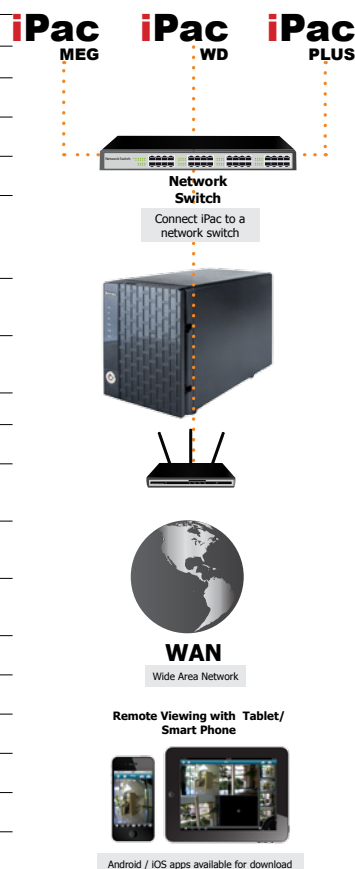
Mini Network Video Recorder

Features:

- Linux Embedded - free from PC crash and virus attack
- High throughput for iPac camera recording
- Supports Stream Profile for remote live view bandwidth control
- Supports mobile client for iPhone / iPad / Android
- Web-based configuration, live viewer, playback
- RAID 0,1,5,10 for maximum capacity or data protection
- Online GUI recording schedule
- Digital PTZ and multi-view
- Real-time digital output, Email alert and push notification on mobile
- Remote I/O solution and camera I/O integration
- Playback with 5 types of intelligent event search
- E-map with indicator & Digital watermark
- Fully compatible with iPac® series camera

Specifications:

Maximum Cameras	4	8	16
Playback Channels	4	8	16
Number of Drives	2 x SATA II	4 x SATA II	
Max Storage / HDD	3TB		
Raid Level	RAID 0,1	RAID 0, 1, 5, 10	
CPU	Marvell 88F6283 1.0GHz	Marvell 88F6282 1.6GHz	
RAM	256MB	512MB	
I/O Interface	2 x USB 2.0	2 x USB 2.0 & 1 x eSATA	
LAN Speed	10/100/1000 Mbps (1xRJ45)	10/100/1000 Mbps (2xRJ45)	
Voltage	100-240V		
Power Consumption	40W	90W	
Dimension	140.0 x 109.8 x 219.0 mm	140.0 x 183.4 x 219.0 mm	
Device Weight	4.67lbs	6.55lbs	
Compression Format	MPEG4, M-JPEG, H.264, MxPEG (depends on IP camera)		
Recording Performance	Around 60/120fps at 1.3M Total bitrate: 40Mbps	Around 240fps at 1.3M Total bitrate: 80Mbps	
Recording Type	Continuous record, record by schedule, event trigger record, digital input trigger record		
Remote Live View Control	Live view, preset/go, PTZ, remote I/O, snapshot, multi-view, digital PTZ, advanced E-Map, bandwidth monitoring		
Audio & Video Recording	Synchronized audio and video recording		
POS	Live view, record, playback, and search for every transaction		
Auto Backup	Automatically backup the recorded video of the date before to FTP server		
Intelligent Search	General motion, missing object, foreign object, lose focus, camera occlusion		
Remote Live View Connection	Live view maximum 64 connections per server at the same time		
Remote Client Software Requirement			
OS	Windows XP (32-bit) / Win7 (32 and 64-bit)		
CPU	Intel Core 2 Duo, 2.6GHz		
RAM	1GB		
LAN Transmission Speed	10/100/1000 Mbps (RJ45)		
UI	1. Web browser: Internet Explorer 8, 9 2. Client application program 3. iPhone, iPad, Android mobile live viewer		





BN-NVR/S4/S8/S16

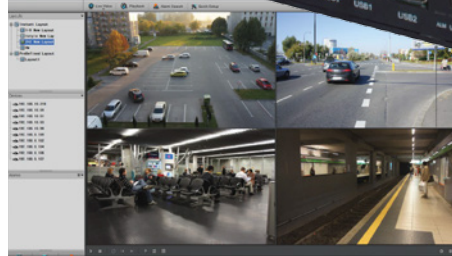
iPac Network Video Recorder

Features:

- High Profile H-264 Recording and Decoding
- Embedded iPac GUI with full mouse control
- High Definition output HDMI or VGA up to 1080p
- Internal removable HDD up two drive
- Easy to use GUI, low learning curve for users
- Multi NVR system setup from NVMS
- Remote view from Web browser
- Live view on your mobile devices iOS or Android

Optional Features:

- 4 Drive model for additional storage
- Industrial 19" Rack with 4 HDD
- PoE external box to give PoE devices



Specifications:

Video

Recording	4ch 1080P real-time video input (30 fps) Or 8ch 720P real-time video input (30fps) Or 16ch D1 real-time video input (30 fps)
Output Display	Single display 1080P or 2 x 720P or 6 x D1 Real Time Display
Output Resolution	VGA or HDMI software select 1280x1024 or 1 024x768 or 1920x1 080p
Decoding	1080p / 720p / 6xD1 (30fps at all resolutions)
Video Decoding	Up to H.264 (ISO/IEC 14496-1 0) high profile to level4.2
Rate Control	VBR / CBR
Stream Input	D1: Standard 2MKbps D1 (main stream) @ 30fps 720P: Standard 4MKbps 720P (main stream) @ 30fps 1080P: Standard 6MKbps 1080P (main stream)@ 30fps
Max. Recording Stream	24Mbits/s

Storage

HDD	2 x HDD (Optional 4 HDDs)
Recording Time	D1: 2Mbit/s, 2M x 3600s/8 = 675MB/H 720P: 4Mbit/s, 4M x 3600s/8/1000 = 1.8GB/H 1080P: 6Mbit/s, 6M x 3600s/8 = 3.6GB/H
Recording Mode	Constant Recording / Motion detection.

Network

Network Control	Thermal controlled fan, silent bearing type.
Web Server	Embedded server supporting Flash Video RTMP server
Network Protocol	RTP/RTCP, TCP/UDP, HTTP, DHCP, DNS Client
Network Port	2 x RJ45, 10/100Base-T
Video Output	1 x DVI with a DVI-VGA DB15 Converter, 1 x HDMI
Audio Output	1 x RCA Audio Output

Physical

Operating Temperature	14°F ~ 131°F
Operating Humidity	20% - 80% Max.
Input Voltage	DC12V, 3A
Dimensions	220x150x100mm(W*D*H)
Weight	9.9lb

iPac **iPac** **iPac**
MEG WD PLUS



Network Switch
Connect iPac to a network switch



- Record & Manage iPac Camera
- Auto sniff for all iPac Camera
- Record up to 1080p resolution

BN5002

Video Server - Analog to Digital Solution

Features:

- Embedded Encoder device
- Standard BNC input video signal
- RCA audio input and output
- Encoding Max 30fps for 1 Channel
- H-264 encoding, dual streaming
- Two way Audio talking via NVMS
- Local MicroSD memory recording
- Alarm input/output & motion detection
- Full web browser server embedded
- Onvif Complaint device

Specifications:

Server	
OS	Linux 2.6
Flash	16M
Memory	128M
Image Resolution	QCIF/CIF/D1
Network	
Compression	H-264 High Profile (Support Baseline Profile)
Resolution	704 x 480 @ 30fps
Stream Range	VBR/CBR 5kb - 4M
Motion Detection	Built-in
Network Protocol	HTTP, TCP/IP, UDP/IP, RTSP, FTP, DHCP, NTP, PPoE, NTP Unicast and Multicast supported
Security	DES/3DES, HTTPS
Interface Characteristics	
Audio	G723.1/6.3kbps
Video	BNC 75ohm
Alarm	1 channel alarm in/out
SD Card	micro SD, up to 32GB
Electrical Characteristics	
Power	DC12V
Power Consumption	420 mamps



Sample Setup





BN-ND

iPac HD Network Decoder

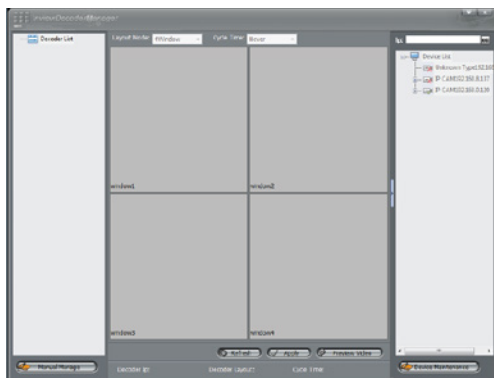
Features:

- Embedded Decoder device: Decode H-264 up to High-Profile
- Display output HDMI or VGA
- Supports Max 1080p display
- Live decoding of IP Devices
- Software setup for cycle display layout
- Show 1, 4 or 6 live devices at once



Software Setup

Auto Detect decoding devices on LAN
Full GUI setup, local test layout view
required only to setup device.



Sample Setup



Supports up to 6 cameras decode at the same time

DIGITAL VIDEO RECORDERS



iPac
IP Systems

Digital Video
Recorders

PTZ & Matrix
Systems

Security
Cameras

Security
Monitors

Covert Cameras

Security
Accessories



SVR9004HD, SVR9008HD

960H H.264 Real Time Recording DVR

Features:

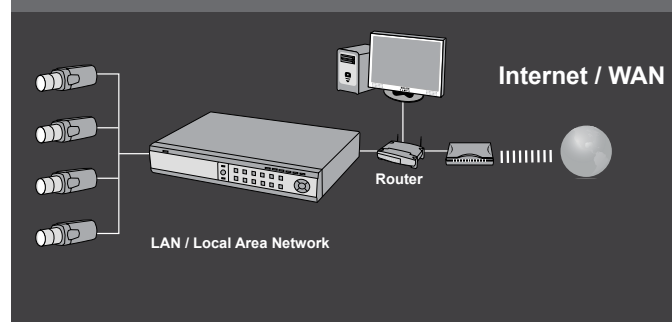
- Real time H.264 compression video data
- 960 x 480 Live viewing resolution
- 960H real time recording
- Bolide DDNS built-in
- Motion alarm and video loss alarm
- Multiple record mode
- System self-recovery after power loss
- Supports IR remote control and PTZ control
- Backup HDD data via USB 2.0 port
- VGA output and HDMI support
- Free DDNS service from Bolide
- Supports iPhone, Android



SVR9000HD/CHD series DVR support up to 700 TV lines per analog security camera. The only DVR can record your surveillance video in real-time at true HD resolution with your analog security cameras!



Connection Diagram



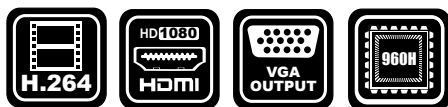
Model Number	SVR9004HD	SVR9008HD
Image Compression	H.264	
Video System	NTSC / PAL	
Operating System	Linux Embedded	
Video Input	4CH input BNC	8CH input BNC
Video Output	1CH output BNC	1CH output BNC
Audio Input/Output	4CH input / 1CH output BNC	8CH input / 1CH output BNC
Display Resolution	960 x 480 @ 30fps Real Time	
Display Mode	Single / Quad / S.E.Q.	Single / Quad / Nine / S.E.Q.
Record Resolution	D1 Mode: 360x240 (CIF) / 720x240 (HD1) / 720x480 (D1) 960H Mode: 480x240 (WCIF) / 960x240 (WHD1) / 960x480 (WD1)	
Record Frame Rate	30fps @ D1 and 960H (each channel)	
Record Mode	Continuous / Manual / Motion Detection / Alarm Activated	
Playback Channel	1 - 4 Ch	1 - 8 Ch
Playback Speed	30fps @ D1 and 960H (each channel)	
Sensor & Alarm In/Out	4CH sensor input / 1CH alarm out	8CH sensor input / 1CH alarm out
Network	Static, DHCP, Bolide DDNS	
HDD Interface	1 SATA HDDs, up to 4TB	
Multiplex Operation	Live Display / Record / Playback / Backup and Network	
USB	2 x USB (Mouse and Backup)	
PTZ Control	Built-in RS485, support Pelco P&D	
Mobile Surveillance	Support Windows Mobile, Symbian, iPhone, Blackberry and Android OS	
VGA	800x600 / 1024x768 / 1280x1024 / 1440x900 / 1920x1080	
HDMI	1080p	
Power	12VDC 2A	
Dimension	12.5" x 9.3" x 2.4"	

SVR9016HD

960H H.264 Real Time Recording DVR

Features:

- Real time H.264 compression video data
- 960 x 480 Live viewing resolution
- 960H real time recording
- Bolide DDNS built-in
- Motion alarm and video loss alarm
- Multiple record mode
- System self-recovery after power loss
- Supports IR remote control and PTZ control
- Backup HDD data via USB 2.0 port
- VGA output and HDMI support
- Free DDNS service from Bolide
- Supports iPhone, Android



Model Number	SVR9016HD
Image Compression	H.264
Video System	NTSC / PAL
Operating System	Linux Embedded
Video Input	16CH input BNC
Video Output	2CH output BNC
Audio Input/Output	16CH input / 2CH output BNC
Display Resolution	960 x 480 @ 30fps Real Time
Display Mode	Single / Quad / Nine / Sixteen with S.E.Q.
Record Resolution	D1 Mode: 360x240 (CIF) / 720x240 (HD1) / 720x480 (D1) 960H Mode: 480x240 (WCIF) / 960x240 (WHD1) / 960x480 (WD1)
Record Frame Rate	30fps @ D1 and 960H (each channel)
Record Mode	Continuous / Manual / Motion Detection / Alarm Activated
Playback Channel	1 - 16 Ch
Playback Speed	30fps @ D1 and 960H (each channel)
Sensor & Alarm In/Out	16CH sensor input / 1CH alarm out
Network	Static, DHCP, Bolide DDNS
HDD Interface	2 SATA HDDs, up to 4TB
Multiplex Operation	Live Display / Record / Playback / Backup and Network
USB	2 x USB (Mouse and Backup)
PTZ Control	Built-in RS485, support Pelco P&D
Mobile Surveillance	Support Windows Mobile, Symbian, iPhone, Blackberry and Android OS
VGA	800x600 / 1024x768 / 1280x1024 / 1440x900 / 1920x1080
HDMI	1080p
Power	12VDC 5A
Dimension	15" x 12.5" x 2"

SVR9008CHD, SVR9016CHD

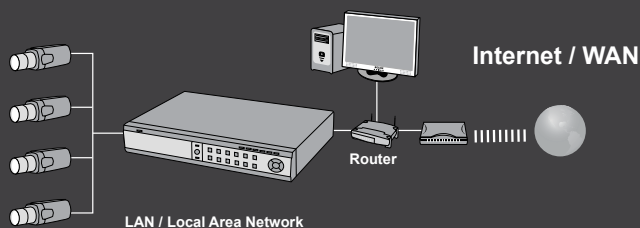
960H H.264 Recording DVR

Features:

- H.264 compression video data
- 960 x 480 Live viewing resolution
- 960H/D1 recording selectable
- Bolide DDNS built-in
- Motion alarm and video loss alarm
- Multiple record mode
- System self-recovery after power loss
- Supports IR remote control and PTZ control
- Backup HDD data via USB 2.0 port
- VGA output and HDMI support
- Free DDNS service from Bolide
- Supports iPhone, Android



Connection Diagram



Model Number	SVR9008CHD	SVR9016CHD
Image Compression	H.264	
Video System	NTSC / PAL	
Operating System	Linux Embedded	
Video Input	8CH input BNC	16CH input BNC
Video Output	1CH output BNC	1CH output BNC
Audio Input/Output	4CH input / 1CH output BNC	4CH input / 1CH output BNC
Display Resolution	960 x 480 @ 30fps Real Time	
Display Mode	Single / Quad / Nine / S.E.Q.	Single / Quad / Nine / Sixteen with S.E.Q.
Record Resolution	D1 Mode: 360x240 (CIF) / 720x240 (HD1) / 720x480 (D1) 960H Mode: 480x240 (WCIF) / 960x240 (WHD1) / 960x480 (WD1)	
Record Frame Rate	30fps@CIF/WCIF, 12fps@D1/HD1, 10fps @ WD1/WHD1	
Record Mode	Continuous / Manual / Motion Detection / Alarm Activated	
Playback Channel	1 - 8 Ch	1 - 16 Ch
Playback Speed	30fps@CIF/WCIF, 12fps@D1/HD1, 10fps @ WD1/WHD1	
Sensor & Alarm In/Out	4CH sensor input / 1CH alarm out	8CH sensor input / 1CH alarm out
Network	Static, DHCP, Bolide DDNS	
HDD Interface	1 SATA HDDs, up to 4TB	
Multiplex Operation	Live Display / Record / Playback / Backup and Network	
USB	2 x USB (Mouse and Backup)	
PTZ Control	Built-in RS485, support Pelco P&D	
Mobile Surveillance	Support Windows Mobile, Symbian, iPhone, Blackberry and Android OS	
VGA	800x600 / 1024x768 / 1280x1024 / 1440x900 / 1920x1080	
HDMI	1080p	
Power	12VDC 2A	
Dimension	12.5" x 9.3" x 2.4"	

SVR9000S/MO

"S-Box" Series Mobile DVR

Features:

- H.264 Compression
- Real time Recording and Playback
- USB2.0 flash drive or SD Card backup
- Optional 3G and GPS
- Ideal for use in car, 9-32VDC Power with low power consumption

Specification:

Model No.	SVR9000s/T4MO
Image Compression	H.264
Video Standard	NTSC
Video Input	4 BNC 1.0 Vp-p 75Ω
Video Output	1 x BNC
Max. Recording Resolution	120fps @ 704x480
Audio Input	4 inputs / 1 outputs
Audio Compression bit rate	8kHz 16bit ADPCM
Alarm IN/Out	4 IN / 2 OUT
HDD Interface	2.5 inch SATA HDD
Backup	USB2.0 Flash Drive, Network, SD Card
Power Source	DC9-32VDC, 10-15W
Dimensions	8.6" x 8.2" x 2.8"



SVR3900S

H.264 All-in-one Digital Video Recorder

Features:

- 7" High Resolution TFT Display
- H.264 video compression with DVD Quality (D1) recording
- Supports SATA up to 1TB Hard Drive
- Adjustable recording quality
- USB easy backup and audio recording

Specification:

Model No.	SVR3900S
Image Compression	H.264
Display	7" TFT
Video Standard	NTSC
Video Input	4 BNC 1.0 Vp-p 75Ω
Video Output	1 x BNC
Max. Recording Resolution	30fps D1, 60fps HD1, 120fps CIF
Audio Input	1 input / 1 output
Audio Compression bit rate	8kHz 16bit ADPCM
Video Mode	Always / Schedule / Manual / Motion
Alarm Type	Motion / Video Loss / HDD Space
HDD Interface	SATA HDD up to 1024GB
Backup	USB2.0 Flash Drive, Network
Power Source	DC12V 3A, 10-15W
Dimension	9.3" x 9.3" x 6.3"



iPac
IP Systems

Digital Video
Recorders

PTZ & Matrix
Systems

Security
Cameras

Security
Monitors

Covert Cameras

Security
Accessories

Memo

Lined area for writing a memo.

PTZ & MATRIX SYSTEMS

iPac
IP Systems

Digital Video
Recorders

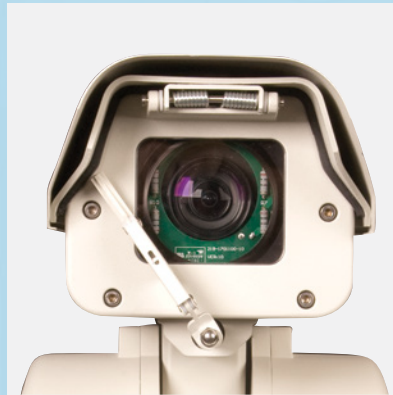
PTZ & Matrix
Systems

Security
Cameras

Security
Monitors

Covert Cameras

Security
Accessories



BC2002/AT88 "EVO"

560x Zoom Advanced Positioning Camera

Features:

- OSD Menu for easy programming
- Built-in Mechanical IR-Cut Filter
- Programmable schedule functions
- 220 presets with title
- Auto running functions:
 - 4 panning, 4 sequences and 4 patterns
- Temperature and Coordinate display
- 9 Language OSD Menu (Spanish, German, Italian etc.)
- Multi-protocols built-in Pelco D/P/C, Bosch, AD, VCL etc.
- -85° to 50° Tilt, 360° Continuous Pan

Specifications:

• Camera Specifications

Sync Systems	Internal
Image Sensor	1/4" Sony Exview HAD CCD
Scan System	2:1 Interface
Resolution	560TVL, 0.01 lux (B/W), 0.5 lux (Color)
Iris	Auto/Manual
Focus	Auto/Manual
Zoom Ratio	560x (Optical 35x, Digital 16x)
Focal Length	F = 3.6mm ~ 126mm
Aperture (F)	F1.6 ~ F4.2
BLC/White Balance	Auto
S/N Ratio	More than 50dB
Video Output	1.0±0.2Vp-p BNC
Interface	RS485/RS422, Bi-phase, Manchester
Multi-Protocol	Pelco D/P/C, AD, VCL, Vicon, Kalatel, Diamond etc.

• Electrical

Input Power	24VAC, 50/60Hz
Power Consumption	60W
Working Voltage	24VAC, 21W (Heater, Fan)
Protection	Video, Data & Power Protection up to 4000V Lightning Strike Resistant

• Environment

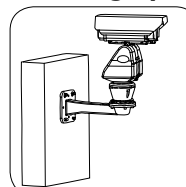
Housing	IP66 Rated
Protection	Sun Shield, Auto Running Defroster, Heater, Fan, Wiper
Operating Temp.	-40°F~140°F
Operating Humidity	0-90%
Operation Wind Speed	54MPH
Withstand Wind Speed	80MPH
Withstand Rain Fall	1/8" Min
Water Jet	Available with relay out

• Mechanical

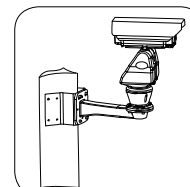
Horizontal Movement	Continuous 360° pan
Vertical Movement	-85° - 50° tilt
Manual Pan Speed	0.1° - 70° /s
Manual Tilt Speed	0.1° - 50° /s
Preset Speed	140°/s
Preset Accuracy	0.1°
Net Weight	22 lbs
Max load	12 lbs



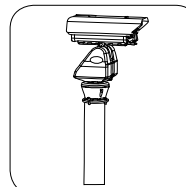
Mounting Options:



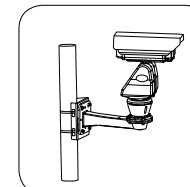
Wall Mount



Corner Mount



Pedestal Mount



Pole Mount

BC1009/PTZ3G

3rd Generation High Speed PTZ Camera

Features:

- Heavy-Duty Outdoor PTZ Camera
- 360° pan and tilt range (Auto flip)
- 35x Optical Zoom / 16x Digital Zoom
- 1/4" Sony Exview HAD CCD with 520 TV Lines Resolution
- Scheduled action setting (4 schedules)
- Aluminum-Alloy construction
- Day/Night Mode
- Built-in multiple protocol
- OSD Menu
- Weather-Proof with IP66 rated housing

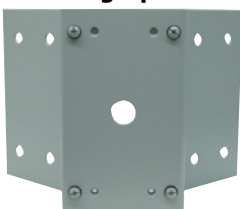
Specifications:

Sync System	Internal/External (Line Lock)
Image Sensor	1/4" Sony Ex-View HAD CCD
Resolution	560 TVL
Sensitivity	0.01 lux (Mono), 0.5 lux (Color)
Iris	Auto/Manual
Focus	Auto/Manual
Zoom	560x (35x Optical, 16x Digital)
Video Output	1.0 Vp-p / 75Ω
S/N	More than 50dB
White Balance	Auto/Manual
BLC	Off/Auto
Aperture (F)	F1.6~F4.2
Focal Length	F=3.6~126mm
Pan/Tilt Speed	0.5° ~ 160°/s
Preset Speed	> 300° /s
Rotation	Pan 360°, Tilt 0°~90°
Auto Flip	Rotates 180° at the bottom
Zoom Speed	5s/8s (Wide/Tele)
Privacy Masking	N/A
Alarm In / Out	7 In / 2 Out
Temperature	-4°F ~ 140°F
Humidity	0~95%
Protection Grade	IP66 Outdoor Housing
Power Consumption	50W
Receiver	Built-in
Video Output	Female BNC
Communication Data	RS485/422, Coaxial Bi-phase, Manchester Code
Baud Rate	2400/4800/9600/19200bps
ID Range	1 ~ 254
Weight	5.6 lbs



**This camera features snap-on installation.
No extra cable or screws required.**

Mounting Options:



Corner Mount



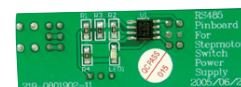
Pole Mount



Parapet Mount

Protocol Options:

- Pelco - C
- RS - 422



BC1009/PTZWD

Wide Dynamic Range High Speed PTZ Camera

Features:

- Heavy Duty Outdoor PTZ Camera
- 360° pan and tilt range (Auto flip)
- 36x Optical Zoom / 12x Digital Zoom
- 1/4" Sony Ex-View CCD with 520 TV Lines Resolution
- Scheduled action setting (4 schedules)
- Aluminum-Alloy construction
- Wide Dynamic Range built-in with IR cut-filter
- Built-in multi protocol
- OSD Menu
- Weather-Proof with IP66 rated housing

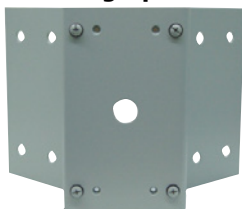
Specifications:

Sync System	Internal
Image Sensor	1/4" Sony Ex-View HAD CCD
Resolution	560 TVL
Sensitivity	1/60 s mode: 1.4 lux (typical) (F1.6, 50 IRE) 1/4 s mode: 0.01 lux (typical) (F1.6, 50 IRE)
Iris	Auto/Manual
Focus	Auto/Manual
Zoom	432x (36x Optical, 12x Digital)
Video Output	1.0 Vp-p / 75Ω
S/N	More than 50dB
White Balance	Auto, ATW, Indoor, Outdoor, Manual
BLC	Off/Auto
Wide Dynamic Range	On/Off
Privacy Masking	24
Aperture (F)	F1.6~F4.5
Focal Length	F=3.4~122.4mm
Pan/Tilt Speed	0.5° ~ 160°/s
Preset Speed	> 300° /s
Rotation	Pan 360°,Tilt 0°~90°
Auto Flip	Rotates 180° at the bottom
Electronic Shutter	1/1 to 1/10,000 s, 22 steps
White Balance	Auto, ATW, Indoor, Outdoor, One-push, Manual
Alarm In / Out	7 In / 2 Out
Temperature	-4°F ~ 140°F
Humidity	0~95%
Protection Grade	IP66 Outdoor Housing
Power Consumption	50W
Receiver	Built-in
Video Output	Female BNC
Communication Data	RS485/422
Baud Rate	2400/4800/9600/19200bps
ID Range	1 ~ 254
Weight	5.6 lbs



This camera features snap-on installation.
No extra cable or screws required.

Mounting Options:



Corner Mount



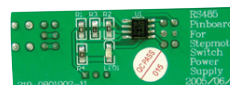
Pole Mount



Parapet Mount

Protocol Options:

- Pelco - C
- RS - 422



BC1009/PTZAMT

High Speed Wide Dynamic PTZ Camera with Motion Tracking

Features:

- Heavy Duty Outdoor PTZ Camera
- 360° pan and tilt range (Auto flip)
- 36x Optical Zoom / 12x Digital Zoom
- 1/4" Sony Ex-View CCD with 520 TV Lines Resolution
- Scheduled action setting (4 schedules)
- Aluminum-Alloy construction
- Wide Dynamic Range built-in with IR cut-filter
- Built-in Motion Tracking
- OSD Menu
- Weather-Proof with IP66 rated housing

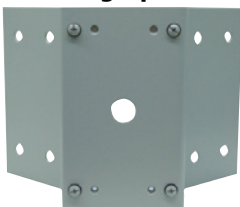
Specifications:

Sync System	Internal
Image Sensor	1/4" Sony Ex-View HAD CCD
Resolution	560 TVL
Sensitivity	1/60 s mode: 1.4 lux (typical) (F1.6, 50 IRE) 1/4 s mode: 0.01 lux (typical) (F1.6, 50 IRE)
Iris	Auto/Manual
Focus	Auto/Manual
Zoom	432x (36x Optical, 12x Digital)
Video Output	1.0 Vp-p / 75Ω
S/N	More than 50dB
White Balance	Auto, ATW, Indoor, Outdoor, Manual
BLC	Off/Auto
Wide Dynamic Range	On/Off
Privacy Masking	24
Aperture (F)	F1.6~F4.5
Focal Length	F=3.4~122.4mm
Pan/Tilt Speed	0.5° ~ 160°/s
Preset Speed	> 300° /s
Rotation	Pan 360°, Tilt 0°~90°
Auto Flip	Rotates 180° at the bottom
Electronic Shutter	1/1 to 1/10,000 s, 22 steps
White Balance	Auto, ATW, Indoor, Outdoor, One-push, Manual
Alarm In/Out	7 in / 2 out
Temperature	-40°F ~ 140°F
Humidity	0~95%
Protection Grade	IP66 Outdoor Housing
Power Consumption	50W
Receiver	Built-in
Video Output	Female BNC
Communication Data	RS485/422, Coaxial Bi-phase, Manchester Code
Baud Rate	2400/4800/9600/19200bps
ID Range	1 ~ 254
Weight	5.6 lbs



**This camera features snap-on installation.
No extra cable or screws required.**

Mounting Options:



Corner Mount



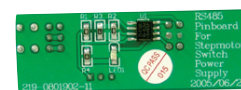
Pole Mount



Parapet Mount

Protocol Options:

- Pelco - C
- RS - 422



BC1009/IDIR "WALL-I"

Heavy Duty Outdoor Night Vision PTZ Camera

Features:

- Heavy Duty Outdoor PTZ Camera
- 360° pan and tilt range (Auto flip)
- Built-in High Power IR: Range up to 200ft
- 35x Optical Zoom / 16x Digital Zoom
- 1/4" CCD with 520 TV Lines Resolution
- Scheduled action setting (4 schedules)
- Aluminum-Alloy construction
- Day/Night Mode
- Wiper function
- Built-in multiple protocol
- OSD Menu
- Weather-Proof with IP66 rated housing

Specifications:

Image Sensor	1/4" Sony Ex-view HAD CCD
Synchronization	Internal
Video Output	1.0Vp-p / 75 Ω
Horizontal Resolution	560TVL
S/N Ratio	≥ 50dB
Minimum illumination	0 Lux (Led On)
Focal & Iris	Auto / Manual
Electronic Shutter	1~1/10,000s, 1/3~1/10,000s
Protective Housing	IP66 Rated
Zoom ratio	35x Optical Zoom, 16x Digital Zoom
White Balance	Auto
BLC	ON/OFF
Aperture	F1.6 ~ F4.2
Focal Length	F=3.6 ~126mm
Panning range	360° continuous
Pan Speed	0.4°-80°/sec
Tilt Range	-90°~90°
Tilt Speed	0.4°-60°/sec
Communication	Multi-protocol
Baud Rate	2400, 4800, 9600, 19200
Controls	Pan/Tilt
Presets	128 preset positions
Auto Pan	ON/OFF
Alarm In/Out	4 In / 1 Out
Shock	≥ 4G
Power Source	IR: AC24V (45W)
Operating Temperature	-40°F-140°F
Weight	13.5 lbs
IR Effective Range	Up to 200ft



High Power Infrared Range up to 200ft



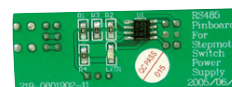
Mounting Options:



Wall Mount Bracket - *Optional

Protocol Options:

- Pelco - C
- RS - 422



BC1009/PTZMINI-S

10x Zoom Mini Speed Dome Camera

Specifications:

Sync System	Internal
Image Sensor	1/4" SONY (Interline transfer) CCD
Resolution	550 TVL Color
Sensitivity	0.01 lux at F1.2
Iris/Focus	Auto/Manual
Zoom Ratio	10x Optical Zoom
Scan System	2:1 Interlacing
S/N	More than 50dB
WB/BLC	Auto/Manual
Focal Length	f=3.8~38mm
Electronic Shutter Speed	1/4 ~ 1/10,000 sec, 20 Steps
Pan/Tilt Speed	0.5° ~ 120°/s
Zoom Speed	1.67sec (Wide to Tele)
Communication Interface	RS485
AE Control	Auto, Manual, Priority Mode, Bright
Video Output	1.0 Vp-p (Sync Negative) and Y/C
Baud Rate	2400/4800/9600
ID Range	1~254
Size	6.5"(W) x 6"(H)
Power	12VDC, 2.5A



Wall Mount



Corner Mount



Pole Mount

Features:

- 1/4" SONY (Interline Transfer) CCD
- 550 TV Lines Resolution
- 0.1 lux/F1.2
- 10x Optical Zoom
- Built-in On-Screen-Display
- Supports Multi-Protocol Pelco D, Pelco P and more
- RS485 Communication bus
- IP67 Rated Weather-proof Housing

BC1009/PTZMINI-E

10x Zoom Mini Speed Dome Camera

Specifications:

Camera	
Sync System	Internal
Image Sensor	1/4" SONY Ex-view HAD CCD
Resolution	560 TVL Color, 600 TVL Mono
Sensitivity	0.0001 lux at F1.6
Iris /Focus	Auto/Manual
Zoom Ratio	10x Optical Zoom
Scan System	2:1 Interlacing
S/N	More than 52dB
Focal Length	f=3.6~44.3mm
WDR	On/Off (128x)
Total Pixel	811 x 508
Electronic Shutter Speed	1/60 ~ 1/10,000 sec
Operational	
Pan/Tilt Speed	Pan: 0.2° ~ 200°/s Tilt: 0.4° ~ 200°/s
Pan/Tilt Range	360°, 0° - 90°, Auto Flip
Preset	128
PTZ Function	Preset / Tour / Scan / Pattern
Communication Interface	RS485
Baud Rate	2400/4800/9600/19200bps
Protocol	Pelco D/P, Samsung
Physical	
Size	6.5"(W) x 6"(H)
Power	12VDC, 5W
Operating Temperature	-40°F~140°F
Operating Humidity	0-75%
Weight	2.8lbs



Features:

- 1/4" SONY Ex-view HAD CCD
- Resolution: 560TVL (Color), 600TVL(Mono)
- 0.0001 lux/F1.6
- 10x Optical Zoom
- Built-in On-Screen-Display
- Supports Multi-Protocol Pelco D, Pelco P and more
- IR cut-filter built-in
- WDR/Privacy Zone/Motion Detection Built-in
- 360° continuous pan with auto-flip



DR-3208

Matrix Video Switcher / System Controller

DR-3208 Matrix unit supports 32 video input and 8 monitor outputs. 5 units can be combined for system expansion, and it allows connections for up to 8 keyboards and 1 external computer for multiple controlling sites. It supports powerful alarm handling, 1024 recent alarm recording, 30 tours sequence switch with up to 6400 steps switching and 16 groups tour switch. Macro command function enables the system to work conveniently.

Features:

Up to 8 Keyboards & 1 Multi-media PC controlling a variety of tour patterns provide the most effective monitoring

- Sequence tour Switch: 30 tours available, up to 640 steps for each tour
- Group tour Switch: 16 groups available, with maximum 64 steps for each group
- Each Camera Sequence Scan is independent
- Powerful Alarm Handling
- 5 Matrix units can be combined for system expansion
- Video Synchronizing makes the video switching easy

Specifications:

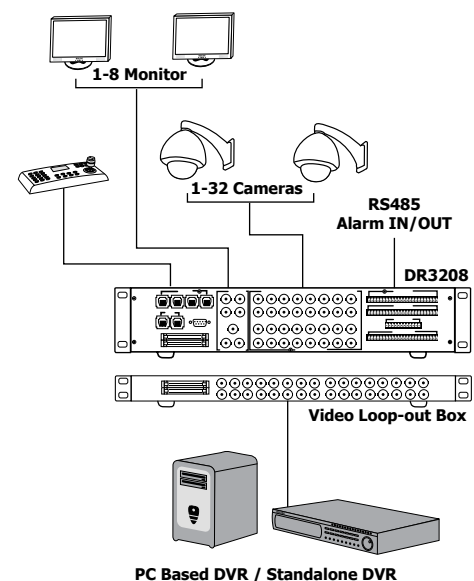
Video Inputs - Standard	32
Video Inputs - Looping	32
Video Outputs	8
Alarm Inputs	32
Alarm Outputs	4
Bandwidth (-3dB)	8MHz
S/N Ratio	More than 52dB
Differential Gain	< 0.6%
Differential Phase	1.1
Insert Gain	< ± 0.5dB
Adjustment Channel Isolation Degree	> 50dB
Adjustment Channel Crosswalk	< -40dB
Synchronous Nonlinear Distortion	1%
Luminance Nonlinear Distortion	1.5%
Video Cable Distance	Minimum cable with 75 Ω
Impedance	RG-59/U : less than 300mm
Input Voltage	AC110V
Power Consumption	< 30W
Operating Temperature	0°C ~ +40°C
Operating Humidity	0% - 90%

External Device Interface:

Video Inputs and Monitor Outputs	BNC
Looping Video Connection	Two 34-pin ribbon connector
Keyboards	Four 6-pin RJ-11 ports to connect keyboards
RS485 Port	Removable screw terminal block to connect groups of 8 RS485 Cable (0.5mm twisted-pair), can be up to 1200m long
RS-232 Port	For external PC or control interface: 9-pin D-type connector
Alarm Inputs	Removable screw terminal connectors



Connection Diagram:



BE-8000

Advanced Network Matrix Video Switcher / System Controller

Features:

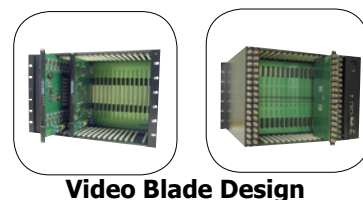
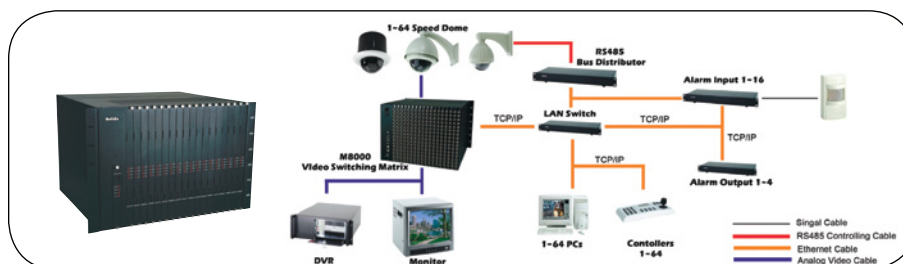
- Built-in modularized high-capability MPU; Up to 32 matrixes integrate over Ethernet
- Compact design; High-capability of inputs and outputs
- Low power consumption; less than 120W for single bay full duty running
- High stability and reliability
- Hot swappable; Plug and play for video input/output card; High Stability
- Low channels crosstalk
- Modularized design; keyboard, distributor, alarm input and alarm output are independent modules cooperate over Ethernet
- Detect and assign IP to devices automatically; Real time non-delay remote control
- Independent internal video channel for system setting. Keyboard and PC settings are available
- 64 channels Chinese and English character overlay
- Power sync switching; Adjustable sync phase (multiple of 60 degree)
- Isolated video channels; high anti-interference capability
- Ethernet hierarchy; Flexible and intelligent system integration
- Single Matrix bay configuration: Max 272 channel inputs; Max 64 channel outputs; Max input configuration: 272 X 16; Max output configuration: 224 X 64
- Four Matrix bay configuration: Max 1024 channel inputs; up to 64 channel outputs; Max input configuration & Max output configuration: 1024 X 64
- Max 4096 video input through Ethernet.



Specifications:

Output Impedance	75 (BNC Ω)
Insert Gain	0.5dB
S/N Ratio Weighted	52dB
Adjacent Channel Isolation Degree Weighted	60dB
Adjacent Channel Crosstalk Weighted	50dB
Frequency Characteristics	50Hz 8MHz
DC Level Video Signal	About 0.4 0.6V
KB/Receiver Controlling Time	20ms (Typical)
Switch	Complete switching of cross-point matrix
Switching Speed	20ms (NTSC)
Video Input	BNC 16 1024 Video Inputs
Video Output	BNC 16 64 Video Outputs
RS232 Port	One RS232 Local PC Port
Baud Rate bps	9600/19200/38400
Ethernet Port	10M
OSD Display	Date/Time, Monitor Title, Camera No. and Title
Character	Common English Characters
Synchronous Phase	Power Sync, Adjustable Sync Phase (multiple of 60 degree)
Data Storage	Various settings and configuration data can last at least 5 years when power-off
Dimension	312mm x 483mm x 420mm
Power Supply	220VAC/50Hz or 110VAC/60Hz
Weight	33 Lbs

Connection Diagram:



Video Blade Design

BE-485BUS/8, BE-485BUS/16

RS485 Bus Channel Distributor

Features:

- TVS 1500W lightning proof and 1500mA surge proof
- Highly insulated input and output channels
- RS485 control, baud rate 2400, 4800, 9600bps
- 16-channel outputs, each channel supports transmitting distance of 1200m (0.56mm twisted-pair wire)
- 4, 8, 12 channels output optional

Specifications:

Power Supply	DC12V 2A
Power Consumption	less than 24W
Receiving Controlling Mode	RS485, RS232
Transmitting Mode	RS485
Max Transmitting Distance	1200mm (0.5mm Twisted Pair)
Operating Temperature	32°F ~ 122°F
Storage Temperature	14°F ~ 122°F
Dimensions	430x210x44mm
Weight	6 lbs



BE-DR-AD300, BE-DR-AD300/16

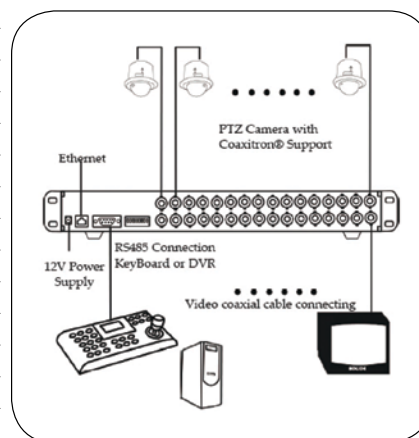
Coaxial Converter

Features:

- Receiving Interface: Built-in RS485/RS422, Manchester, BI-Phase Code
- Transmitting output (BNC, with video and controlling data)
- With power supply / receiving red LED and signal transmitting green LED
- Multi-protocol options available by setting DIP switches such as: Pelco-D, Pelco-P, Kalatel, Panasonic, VCL, Bosch, American Dynamics and more...
- 120Ω jumper in receiving interface
- 400V video lightning resistant

Specifications:

Model	BE-DR-AD-300	BE-DR-AD-300/16
Output Channel (s)	1	16
Supply Voltage DC	DC9V +20%	DC12V +20%
Power	less than 1W	less than 6W
Weight	.5 lbs	4.5 lbs
Receiving Controlling Mode	RS485/RS422/Manchester/BI-Phase	
Receiving Baud Rate	4800/9600/19200bps	
Receiving Baud Rate	32K bps (Manchester / BI-Phase)	
Transmitting Mode	Coaxial Video & Control Data	
Max. Transmission Distance	300m (0.5mm Twisted Pair Cable)	
Operating Temperature	32°F ~ 122°F	
Storage Temperature	14°F ~ 122°F	
Dimension (mm)	5.6" x 2.66" x 1.36"	19" x 6.3" x 2"





BE-KB03E

2 Axis Computerized Controller



Features:

- Compact Design, attractive appearance
- Control Pan/Tilt, Focus, Zoom, Iris
- 1200m maximum range
- Controls up to 32 PTZ Cameras

Specifications:

Communication Port	RS-485
Baud Rate	2400/4800/9600bps
System Settings	One 8-bit DIP Switcher
P/T/Z Control	left/right: up/down, Iris: Open/Close Focus: far/near, Zoom: in/out Save/Call Preset
Joystick	Two Axis (Left, Right)
Power Supply	DC 12V 500mA
Dimension	7.4" x 3.82" x 2.76"



BE-KB02

3 Axis Computerized Controller



Features:

- 3-Axis Joystick control (PTZ)
- Compact, Ergonomic Design
- Various Speed for PTZ control
- LCD Screen with backlight
- Multi Protocol Built-in

Specifications:

Communication Port	RS-485/RJ45
Baud Rate	2400/4800/9600bps
System Settings	DIP Less OSD Software
P/T/Z Control	left/right: up/down Iris: up/down Focus: far/near Zoom: in/out Save/Call Preset/Tour/Pattern
Joystick	Three Axis (Left, Right, Zoom In/Out)
Power Supply	DC 12V 200mA
Dimension	8.6" x 7.1" x 2.2"



BE-KB08

3 Axis Computerized Controller

Features:

- LCD Menu for easy operation
- Controls up to 255 Bolide Devices
- 3-axis joystick design
- Camera function setup: Address, Presets, Auto Tour, Auto Scan...
- USB communication for Matrix control
- RJ45 connection for BE-8000

Specifications:

Communication Port	Interface: RS-485, USB Ethernet Connector: RJ11, RS232, DB9 Baud Rate: 2400/4800/9600/19200bps
System Settings	One 8-bit DIP Switch
Display	128x64 Dot Matrix, 21x8 Characters
P/T/Z Control	left/right: up/down, Iris: up/down
Switch/Control	Focus: far/near, Zoom: in/out Save/Call Preset, Auto-Scan, Pattern, Tour
Joystick	Three Axis (Left, Right, Zoom)
Power Supply	DC 9V
Power Consumption	4.5W
Dimension	12" x 7.6" x 2.2"



iPac
IP Systems

Digital Video
Recorders

PTZ & Matrix
Systems

Security
Cameras

Security
Monitors

Covert Cameras

Security
Accessories

Memo

Lined area for writing a memo.

SECURITY CAMERAS

Tiger-i
RED-i
EAGLE-i



iPac
IP Systems

Digital Video
Recorders

PTZ & Matrix
Systems

Security
Cameras

Security
Monitors

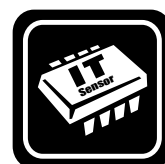
Covert Cameras

Security
Accessories



Tiger-i

Bolide's Tiger-i cameras are high resolution color surveillance camera powered by latest IT image sensor. These cameras deliver excellent images for monitoring and recording at 600 TV Lines Resolution. With built-in Mechanical IR-Cut Filter, these cameras able to offer clear images 24 hours a day.



BC1609/IROD/T

Outdoor Eyeball IR Camera with IT Sensor

Features:

- Advanced IT Image Sensor
- 600 TV Lines Resolution
- 0 lux IR On
- IR cut-filter built-in
- 3.6mm Mega Pixel Lens
- Advanced Day/Night auto switching mode
- 24 Leds with 65ft effective distance

Specifications:

Imaging Sensor	1/3" IT Image Sensor
Total Pixel	768(H) x 494(V)
Signal System	NTSC
Sensing Area	4.8mm x 3.6mm
Sync. System	Internal
Resolution	600 TVL
Lens	3.6mm Mega Pixel Lens
White Balance	ATW
S/N Ratio	More than 50dB (AGC off)
Electronic Shutter	1/60 ~ 1/100,000 sec
Video Output	1.0 Vp-p, 75 ohm
Minimum Illumination	0 lux (IR On)
IR Leds	24 units, 850nm, 65ft
IR Cut-filter	Built-in
Gamma Correction	0.45
Power	12VDC, Less than 5W
Operating Temperature	-4°F ~ 122°F
Weight	0.77 lbs



BC6609/28/T

Outdoor IR Vari-focal Camera with IT Sensor

Specifications:

Imaging Sensor	1/3" IT Image Sensor
Total Pixel	768(H) x 494(V)
Signal System	NTSC
Sensing Area	4.8mm x 3.6mm
Sync. System	Internal
Resolution	600 TVL
Lens	2.8-12mm Mega Pixel Lens
White Balance	ATW
S/N Ratio	More than 50dB (AGC off)
Electronic Shutter	1/60 ~ 1/100,000 sec
Video Output	1.0 Vp-p, 75 ohm
Minimum Illumination	0 lux (IR On)
IR Leds	35 units, 850nm, 90ft
IR Cut-filter	Built-in
Gamma Correction	0.45
Power	12VDC, Less than 5W
Operating Temperature	-4°F ~ 122°F
Weight	1.15 lbs



Features:

- Advanced IT Image Sensor
- 600 TV Lines Resolution
- 0 lux IR On
- IR cut-filter built-in
- 2.8-12mm Mega Pixel Lens
- Advanced Day/Night auto switching mode
- 35 Leds with 90ft effective distance

BC6609/IRODVA28/T

Outdoor IR Vari-focal Eyeball Camera with IT Sensor

Specifications:

Imaging Sensor	1/3" IT Image Sensor
Total Pixel	768(H) x 494(V)
Signal System	NTSC
Sensing Area	4.8mm x 3.6mm
Sync. System	Internal
Resolution	600 TVL
Lens	2.8-12mm Mega Pixel Lens
White Balance	ATW
S/N Ratio	More than 50dB (AGC off)
Electronic Shutter	1/60 ~ 1/100,000 sec
Video Output	1.0 Vp-p, 75 ohm
Minimum Illumination	0 lux (IR On)
IR Leds	21 units, 850nm, 65ft
IR Cut-filter	Built-in
Gamma Correction	0.45
Power	12VDC, Less than 5W
Operating Temperature	-4°F ~ 122°F
Weight	2.4 lbs



Features:

- Advanced IT Image Sensor
- 600 TV Lines Resolution
- 0 lux IR On
- IR cut-filter built-in
- 2.8-12mm Mega Pixel Lens
- Advanced Day/Night auto switching mode
- 21 Leds with 65ft effective distance

BC6635/T

Outdoor IR Bullet Camera with IT Sensor

Specifications:

Imaging Sensor	1/3" IT Image Sensor
Total Pixel	768(H) x 494(V)
Signal System	NTSC
Sensing Area	4.8mm x 3.6mm
Sync. System	Internal
Resolution	600 TVL
Lens	3.6mm Mega Pixel Lens
White Balance	ATW
S/N Ratio	More than 50dB (AGC off)
Electronic Shutter	1/60 ~ 1/100,000 sec
Video Output	1.0 Vp-p, 75 ohm
Minimum Illumination	0 lux (IR On)
IR Leds	24 units, 850nm
IR Distance	65ft
IR Cut-filter	Built-in
Gamma Correction	0.45
Infrared Switching	3 Lux
Power	12VDC, Less than 5W
Operating Temperature	-4°F ~ 122°F
Weight	0.65 lbs



Features:

- Advanced IT Image Sensor
- 600 TV Lines Resolution
- 0 lux IR On
- IR cut-filter built-in
- 3.6mm Mega Pixel Lens
- Advanced Day/Night auto switching mode
- 24 Leds with 65ft effective distance

BC6636/28T

Outdoor IR Vari Focal Bullet Camera with IT Sensor

Specifications:

Imaging Sensor	1/3" IT Image Sensor
Total Pixel	768(H) x 494(V)
Signal System	NTSC
Sensing Area	4.8mm x 3.6mm
Sync. System	Internal
Resolution	600 TVL
Lens	2.8-12mm
White Balance	ATW
S/N Ratio	More than 50dB (AGC off)
Electronic Shutter	1/60 ~ 1/100,000 sec
Video Output	1.0 Vp-p, 75 ohm
Minimum Illumination	0 lux (IR On)
IR Leds	36 units, 850nm
IR Distance	100ft
IR Cut-filter	Built-in
Gamma Correction	0.45
Infrared Switching	3 Lux
Power	12VDC, Less than 5W
Operating Temperature	-4°F ~ 122°F
Weight	0.85 lbs



Features:

- Advanced IT Image Sensor
- 600 TV Lines Resolution
- 0 lux IR On
- IR cut-filter built-in
- 2.8-12mm Mega Pixel Lens
- Advanced Day/Night auto switching mode
- 36 Leds with 100ft effective distance



iPac
IP Systems

Digital Video
Recorders

PTZ & Matrix
Systems

Security
Cameras

Security
Monitors

Covert Cameras

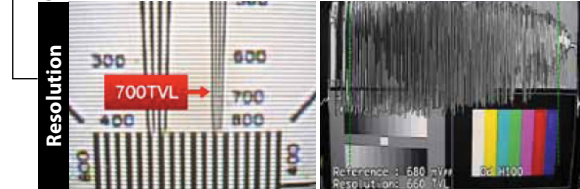
Security
Accessories



Effio - "Enhanced Features and Fine Image Processor"

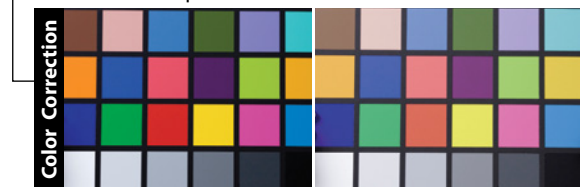
"Effio" is the latest Sony signal processor which realizes high resolution, high S/N ratio and high color reproduction for security cameras. In the field of the security cameras, the visibility is thought to be most important. And also high sensitivity and higher pixel counts are the most demanded elements. Born out of the market needs the Sony "Effio" was created as the highest level of technology for CCD cameras. With the combination of signal processing technology the "Effio" system is matched with all new CCD sensors to give achieve these results.

High Resolution 700 TVL



With the advanced technology, effio cameras have higher horizontal resolution of 700TVL by CCD image sensor.

Excellent color reproduction



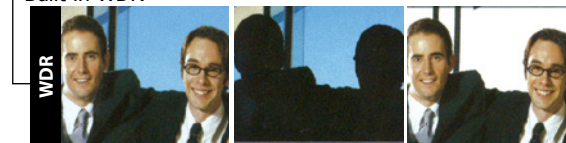
Excellent color reproduction under variety of light sources [1,800K to 10,500K]

Excellent Noise Reduction



Noise reduction is a function that reduces the image noise in order to improve the image quality of the camera. In particular, it reduces the noise which is generated under low-brightness shooting conditions and other high-gain states.

Built-in WDR



The Wide Dynamic Range (WDR) is a function that it can acquire natural images with fewer blown out highlights and blocked up shadows by combining a multiple number of images, shot at different exposure times, using digital signal processing.

BC8002EFO

EFFIO High Resolution Box Camera

Specifications:

Image Sensor	1/3" Sony 760H Double Speed CCD
Pixel	811(H) x 508(V)
Syn. System	Line Lock / Internal Sync.
Shutter Speed	1/60 ~ 1/100000s
S/N Ratio	More than 52dB
Resolution	Color 610TVL, B/W 630TVL
Minimum Illumination	Color 0.1 lux, B/W 0.01 lux, Sense-up 0.001
Wide Dynamic Range	256x (53dB)
Dynamic Noise Reduction	3D/2D
E-zoom	1x ~ 256x
BLC	WDR/BLC/Off
Sense Up	Auto (Limit 2x ~ 512x) / Off
Flickerless	On/Off
Digital Day & Night Mode	Color / B&W / Auto / Ext / Schedule
Video Output	1.0Vp-p, 75 Ohm, BNC
White Balance	ATW/AWB/AWC/Manual/Outdoor
Lens Mount	C / CS Mount
Power	12VDC/24VAC
Dimension	2.5" x 2.3" x 4.85" (WxHxL)
Operating Temperature	14°F - 122°F
Operating Humidity	-4°F - 150°F



Features:

- 1/3" Super Hi-Resolution CCD
- New Sony Effio DSP
- Up to 610TVL Color / 630TVL B&W
- Low lux rating at 0.001 lux
- 2D/3D Noise Reduction
- Built-in Motion Detection/Privacy Masking
- Wide Dynamic Technology 53dB 256x
- E-zoom (1x~256x)
- OSD control for simple setup

BC8002EFO/E

EFFIO-e High Resolution Box Camera

Specifications:

Image Sensor	1/3" Sony Super HAD II Hi-sensitive CCD
Pixel	NTSC 470k
Syn. System	Power / Internal Sync.
Shutter Speed	1/60 ~ 1/100000s
S/N Ratio	More than 50dB
Resolution	Color 650TVL, B/W 700TVL
Minimum Illumination	Color 0.3 lux, B/W 0.001 lux
Day/Night Switch	Auto/Color/B&W/External Control
D/N Switch Time	0s ~ 255s Optional
Privacy Zone	1~8 zones
Motion Detection	4 zones
Image Color	0-255 adjustable
BLC/HLC	On/Off
Image Brightness	0-255 adjustable
Video Output	1.0Vp-p, 75 Ohm, BNC
White Balance	ATWB/Push/User1/User2/Color-Rolling/Manual
3D DNR	Y/C, Y, C (3 modes)
Contrast	0-255 adjustable
Sharpness	0-255 adjustable
Power	12VDC/24VAC
Power Consumption	2.0W
Operating Temperature	14°F - 122°F
Operating Humidity	-4°F - 150°F



Features:

- 1/3" Sony Super HAD Hi-sensitive CCD
- New Sony Effio-e DSP
- Up to 650TVL Color / 700TVL B&W
- Low lux rating at 0.001 lux
- 2D/3D Noise Reduction
- Built-in Motion Detection/Privacy Masking
- Wide Dynamic Technology
- BLC/HLC Built-in
- OSD control for simple setup

BC6736/28EFO

EFFIO-e Outdoor IR Bullet Vari-Focal Camera

Specifications:

Image Sensor	Sony Effio-E DSP, 1/3" 960H CCD
Effective Pixels	NTSC:976(H)x494(V)
Horizontal Resolution	700TVL
Lens	2.8~12mm Mega Pixel Lens
Signal System	NTSC
Sync. System	Internal Sync.
Sensor Area	4.8mmx3.6mm
Video Output:	1.0Vp~p75Ω
S/N Ratio:	More than 50dB (AGC OFF)
Gamma Characteristic:	0.45
White Balance:	Auto Tracking White Balance
Shutter Speed:	1/50(1/60)~100,000Sec.
Weather-proof:	IP66
Minimum Illumination:	0Lux (Infrared Lamps Turn on)
IR Leds:	48pcs 850nm, 125ft
Working Temperature:	-14°F - 122°F
Storage Temperature:	-4°F - 140°F
Power Requirement:	DC12V
Power Consumption	Less than 5W (IR On)
Weight:	1.7lbs



Features:

- 1/3" 960H CCD with Sony Effio-E DSP
- 700TVL High Resolution
- 2.8~12mm Mega Pixel Lens
- 48pcs IR Leds, up to 125ft IR distance
- 2D DNR
- IP66 Weatherproof Housing

BC6709IRODVA28EFO

EFFIO-e Eyeball Armored Outdoor Camera

Specifications:

Image Sensor	Sony Effio-E DSP, 1/3" 960H CCD
Effective Pixels	NTSC:976(H)x494(V)
Horizontal Resolution	700TVL
Lens	2.8~12mm Mega Pixel Lens
Signal System	NTSC
Sync. System	Internal Sync.
Sensor Area	4.8mmx3.6mm
Video Output:	1.0Vp~p75Ω
S/N Ratio:	More than 50dB (AGC OFF)
Gamma Characteristic:	0.45
White Balance:	Auto Tracking White Balance
Shutter Speed:	1/50(1/60)~100,000Sec.
Weather-proof:	IP66
Minimum Illumination:	0Lux (Infrared Lamps Turn on)
IR Leds:	36pcs 850nm, 100ft
Working Temperature:	-14°F - 122°F
Storage Temperature:	-4°F - 140°F
Power Requirement:	DC12V
Power Consumption	Less than 5W (IR On)
Weight:	2.4lbs



Features:

- 1/3" 960H CCD with Sony Effio-E DSP
- 700TVL High Resolution
- 2.8~12mm Mega Pixel Lens
- 36pcs IR Leds, up to 100ft IR distance
- 2D DNR Built-in
- IP66 Weatherproof Housing

BC6709/AVAIR28EFO

EFFIO-e Outdoor Dome Vari Focal

Specifications:

Image Sensor	Sony Effio-E DSP, 1/3" 960H CCD
Effective Pixels	NTSC:976(H)x494(V)
Horizontal Resolution	700TVL
Lens	2.8~12mm Mega Pixel Lens
Signal System	NTSC
Sync. System	Internal Sync.
Sensor Area	4.8mmx3.6mm
Video Output:	1.0Vp~p75Ω
S/N Ratio:	More than 50dB (AGC OFF)
Gamma Characteristic:	0.45
White Balance:	Auto Tracking White Balance
Shutter Speed:	1/50(1/60)~100,000Sec.
Weather-proof:	IP66
Minimum Illumination:	0Lux (Infrared Lamps Turn on)
IR Leds:	21pcs 850nm, 60ft
Working Temperature:	-14°F - 122°F
Storage Temperature:	-4°F - 140°F
Power Requirement:	DC12V
Power Consumption	Less than 5W (IR On)
Weight:	2.25lbs



Features:

- 1/3" 960H CCD with Sony Effio-E DSP
- 700TVL High Resolution
- 2.8~12mm Mega Pixel Lens
- 21pcs IR Leds, up to 60ft IR distance
- Day&Night Working Mode
- IP66 Weatherproof Housing

BC6702EFO

EFFIO-e Box High Resolution Camera

Specifications:

Image Sensor	Sony Effio-E DSP, 1/3" 960H CCD
Effective Pixels	NTSC:976(H)x494(V)
Horizontal Resolution	700TVL
Lens Mount	C/CS Mount
Signal System	NTSC
Sync. System	Internal Sync.
Sensor Area	4.8mmx3.6mm
OSD Functions	ATR/2D DNR/BLC/HLC/Motion Detection/Privacy
Video Output:	1.0Vp~p75Ω
S/N Ratio:	More than 50dB (AGC OFF)
Gamma Characteristic:	0.45
White Balance:	Auto Tracking White Balance
Shutter Speed:	1/50(1/60)~100,000Sec.
Minimum Illumination:	0.01 lux
Working Temperature:	-14°F - 122°F
Storage Temperature:	-4°F - 140°F
Power Requirement:	DC12V/AC24V
Power Consumption	Less than 1.5W
Weight:	0.85lbs



Features:

- 1/3" 960H CCD with Sony Effio-E DSP
- 700TVL High Resolution
- 2D DNR / ATR / HLC Built-in
- OSD Built-in
- Mechanical IR Cut-filter

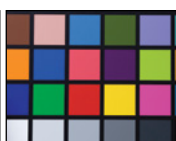
RED-i

Bolide introduces all new Red-i™ cameras to meet the needs of today's high resolution surveillance requirements. These cameras not only feature 600 TVL in color with excellent color reproduction CCD, but also built-in different features for extreme light condition

such as Digital Wide Dynamic Range (WBLC), Super Low Lux Starlight mode (0.001 lux with sense up), Digital Noise Reduction DNR) and Highlight Compensation (HLC). Other features like motion detection, and privacy masking are also built-in to maximize the control of the area. Several mounting options and models are available to fit your needs.



Other Camera



Excellent Color Processor



Other Camera



Digital WBLC



Other Camera



Advanced DNR



Other Day/Night Camera



Sense Up Function



BC7002SDD12/24/R

600/700TVL RS-485 Professional Box Camera

Specifications:

Image Sensor	1/3" Sony Super HAD CCD II
Effective Pixels	811H x 508V
Resolution	Color 600TVL, Mono 700TVL
Minimum Illumination	Color 0.1Lux, Mono 0.001 Lux
Shutter Speed	1/60 ~ 1/100,000s
S/N Ratio	more than 50dB (AGC Off)
Syn. System	Internal
WDR	Digital WDR
Privacy Zone	1-8 zones
D/N Switch	Auto/Color/B&W
D/N Switch Timing	0s~10s
Image Brightness	0~99 adjustable
AGC	Off/12db/24db/36db
HLC	On/Off
BLC	0~3 adjustable
Motion Detection	On/Off
AWB	Manual/Auto/Auto Tracking
Sharpness	0~49 adjustable
Gamma	0.3~1.0 adjustable
DPC	MDPC/ADPC
3D DNR	0~5 adjustable
DSS	Off/x2/x4/x8/x16/x32/x64/x128/x256
RS485	Support
Protocol	Pelco-D, 2400/9600/14400/19200/38400
Power	12VDC / 24VAC
Operation Temperature	-14°F ~ 140°F
Operation Humidity	20-80%



Built-in OSD Control

Features:

- 1/3" Super HAD CCD II High resolution DSP
- Color: 600TVL, B/W: 700TVL
- 3 different day/night modes with delay time
- Motion detection
- 8 Programmable privacy masking
- Digital Wide Dynamic Range (WBLC)
- Advanced DNR (Digital Noise Reduction)
- Super Low Lux starlight mode 0.001 with sense up



BC7035H/12/24R

600/700TVL Outdoor RS485 IR Bullet Camera

Specifications:

Image Sensor	1/3" Sony Super HAD CCD II
Effective Pixels	811H x 508V
Resolution	Color 600TVL, Mono 700TVL
Minimum Illumination	Color 0.1Lux, Mono 0.001 Lux
Shutter Speed	1/60 ~ 1/100,000s
S/N Ratio	more than 50dB (AGC Off)
Syn. System	Internal
WDR	Digital WDR
Privacy Zone	1-8 zones
D/N Switch	Auto/Color/B&W
AGC/BLC/AWB	Built-in
Motion Detection	On/Off
Sharpness	0~49 adjustable
Gamma	0.3~1.0 adjustable
DPC	MDPC/ADPC
3D DNR	0~5 adjustable
Leds	650nm/850nm
Leds Effective Range	50ft
DSS	Off/x2/x4/x8/x16/x32/x64/x128/x256
RS485	Support
Protocol	Pelco-D, 2400/9600/14400/19200/38400
Power	12VDC / 24VAC
Operation Temperature	-14°F ~ 140°F
Operation Humidity	20-80%



Features:

- 1/3" Super HAD CCD II High resolution DSP
- Color: 600TVL, B/W: 700TVL
- 3 different day/night modes with delay time
- Motion detection
- 8 Programmable privacy masking
- Digital Wide Dynamic Range (WDR)
- Advanced DNR (Digital Noise Reduction)
- Night vision IR for night operation



BC7009

600/700TVL Indoor Dome Camera

Specifications:

Image Sensor	1/3" Sony Super HAD CCD II
Effective Pixels	811H x 508V
Resolution	Color 600TVL, Mono 700TVL
Minimum Illumination	Color 0.1Lux, Mono 0.001 Lux
Shutter Speed	1/60 ~ 1/100,000s
S/N Ratio	more than 50dB (AGC Off)
Syn. System	Internal
WDR	Digital WDR
Privacy Zone	1-8 zones
D/N Switch	Auto/Color/B&W
Image Brightness	0~99 adjustable
AGC/BLC/AWB	Built-in
Motion Detection	On/Off
Sharpness	0~49 adjustable
Gamma	0.3~1.0 adjustable
DPC	MDPC/ADPC
3D DNR	0~5 adjustable
DSS	Off/x2/x4/x8/x16/x32/x64/x128/x256
Power	12VDC / 24VAC
Operation Temperature	-14°F ~ 140°F
Operation Humidity	20-80%



Features:

- 1/3" Super HAD CCD II High resolution DSP
- Color: 600TVL, B/W: 700TVL
- 3 different day/night modes with delay time
- Motion detection
- 8 Programmable privacy masking
- Digital Wide Dynamic Range (WDR)
- Advanced DNR (Digital Noise Reduction)
- Super Low Lux starlight mode 0.001 with sense up

BC7009AVAIR12/24/R

600/700TVL Vandal Proof IR Dome Camera

Specifications:

Image Sensor	1/3" Sony Super HAD CCD II
Effective Pixels	811H x 508V
Resolution	Color 600TVL, Mono 700TVL
Minimum Illumination	Color 0.1Lux, Mono 0.001 Lux
Shutter Speed	1/60 ~ 1/100,000s
S/N Ratio	more than 50dB (AGC Off)
Syn. System	Internal
WDR	Digital WDR
Privacy Zone	1-8 zones
D/N Switch	Auto/Color/B&W
AGC/BLC/AWB	Built-in
Motion Detection	On/Off
Sharpness	0~49 adjustable
Gamma	0.3~1.0 adjustable
DPC	MDPC/ADPC
3D DNR	0~5 adjustable
Leds	850nm, 50ft
DSS	Off/x2/x4/x8/x16/x32/x64/x128/x256
RS485	Support
Protocol	Pelco-D, 2400/9600/14400/19200/38400
Housing	IP66
Power	12VDC / 24VAC
Operation Temperature	-14°F ~ 140°F
Operation Humidity	20-80%



Features:

- 1/3" Super HAD CCD II High resolution DSP
- Color: 600TVL, B/W: 700TVL
- 3 different day/night modes with delay time
- Motion detection
- 8 Programmable privacy masking
- Digital Wide Dynamic Range (WBLC)
- Advanced DNR (Digital Noise Reduction)
- Super Low Lux starlight mode 0.001 with sense up

BC7009SDNVA12/24/R

600/700TVL Vari-focal IR Dome Camera

Specifications:

Image Sensor	1/3" Sony Super HAD CCD II
Effective Pixels	811H x 508V
Resolution	Color 600TVL, Mono 700TVL
Minimum Illumination	Color 0.1Lux, Mono 0.001 Lux
Shutter Speed	1/60 ~ 1/100,000s
S/N Ratio	more than 50dB (AGC Off)
Syn. System	Internal
WDR	Digital WDR
Privacy Zone	1-8 zones
D/N Switch	Auto/Color/B&W
AGC/BLC/AGC	Built-in
Motion Detection	On/Off
Sharpness	0~49 adjustable
Gamma	0.3~1.0 adjustable
DPC	MDPC/ADPC
3D DNR	0~5 adjustable
Leds	850nm, 50ft
DSS	Off/x2/x4/x8/x16/x32/x64/x128/x256
RS485	Support
Protocol	Pelco-D, 2400/9600/14400/19200/38400
Power	12VDC / 24VAC
Operation Temperature	-14°F ~ 140°F
Operation Humidity	20-80%



Features:

- 1/3" Super HAD CCD II High resolution DSP
- Color: 600TVL, B/W: 700TVL
- 3 different day/night modes with delay time
- Motion detection
- 8 Programmable privacy masking
- Digital Wide Dynamic Range (WBLC)
- Advanced DNR (Digital Noise Reduction)
- Super Low Lux starlight mode 0.001 with sense up



BC7009IRODVA

600/700TVL Vari-focal Eyeball IR Dome Camera

Features:

- 1/3" Super HAD CCD II High resolution DSP
- Color: 600TVL, B/W: 700TVL
- 3 different day/night modes with delay time
- Motion detection
- 8 Programmable privacy masking
- Digital Wide Dynamic Range (WBLC)
- Advanced DNR (Digital Noise Reduction)
- Super Low Lux starlight mode 0.001 with sense up
- 3 axis eyeball style for easy installation

Specifications:

Image Sensor	1/3" Sony Super HAD CCD II
Effective Pixels	811H x 508V
Resolution	Color 600TVL, Mono 700TVL
Minimum Illumination	Color 0.1Lux, Mono 0.001 Lux
Shutter Speed	1/60 ~ 1/100,000s
S/N Ratio	more than 50dB (AGC Off)
Syn. System	Internal
WDR	Digital WDR
Privacy Zone	1-8 zones
D/N Switch	Auto/Color/B&W
Image Brightness	0~99 adjustable
AGC	Off/12db/24db/36db
BLC	0~3 adjustable
Motion Detection	On/Off
AWB	Manual/Auto/Auto Tracking/Lock
Sharpness	0~49 adjustable
Gamma	0.3~1.0 adjustable
DPC	MDPC/ADPC
3D DNR	0~5 adjustable
Leds	650nm/850nm
Leds Effective Range	50ft
DSS	Off/x2/x4/x8/x16/x32/x64/x128/x256
RS485	Support
Protocol	Pelco-D
Support Baud Rate	2400/9600/14400/19200/38400
Housing	IP66
Power	12VDC / 24VAC
Operation Temperature	-14°F ~ 140°F
Operation Humidity	20-80%



EAGLE-i

"Monitoring in the dark with no IR"

Bolide introduces the all new Eagle-i™ cameras for extreme low light conditions. With improved shutter technology and thanks to a new generation DSP, Eagle-i™ cameras create more detail and stunning pictures without the use of infrared (IR). Compared to traditional day and night cameras, the noise level of the picture is adjusted to minimum and require less light level (0.001 lux). Eagle-i™ cameras also feature up to 600 TVL resolution, DNR and WDR which delivery high quality video in any extreme light condition.

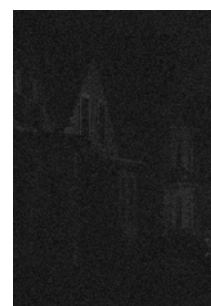
"Monitoring in the dark with no IR"



Eagle-i™ Camera



Infrared Camera



Day & Night Camera

BC7102

Eagle-i™ Super Night Vision Box Camera

Specifications:

Image Sensor	1/3" Super HAD II CCD
Sensing Area	4.9mm x 3.7mm
Effective Pixels	768H x 494V
Resolution	Color 600TVL
Minimum Illumination	Color 0.03Lux, Mono 0.001 Lux
Shutter Speed	1/60 ~ 1/100,000
Sync System	Internal
Scanning Type	2:1 Interlace Scanning
Video Output	1.0Vp-p, 75 Ohm
S/N Ratio	> 50dB (AGC Off)
DWDR	Yes
Mechanical ICR	Yes
Slow Shutter	Max 128x
White Balance	ATW/Fluorescent/Manual
BLC	48 Areas
Motion Detection	48 Areas
DNR	2D/3D DNR
Camera ID	Max Character Title
Lens	3.6mm
Power Supplies	12VDC
Power Consumption	120mA
Operating Temperature	14°F - 122°F
Storage Temperature	-4°F - 150°F



Features:

- 1/3" Super HAD II CCD
- 600TVL Resolution
- Advanced Starlight Sensing
- Low Lux Rating: Color 0.03, B/W 0.001
- Advanced 3D DNR for noise control
- Digital Slow Shutter, up to 128x
- Ideal for low light condition



BC7109

Eagle-i™ Super Night Vision Indoor Dome Camera

Specifications:

Image Sensor	1/3" Super HAD II CCD
Sensing Area	4.9mm x 3.7mm
Effective Pixels	768H x 494V
Resolution	Color 600TVL
Minimum Illumination	Color 0.03Lux, Mono 0.001 Lux
Shutter Speed	1/60 ~ 1/100,000
Sync System	Internal
Scanning Type	2:1 Interlace Scanning
Video Output	1.0Vp-p, 75 Ohm
S/N Ratio	> 50dB (AGC Off)
DWDR	Yes
Slow Shutter	Max 128x
White Balance	ATW/Fluorescent/Manual
BLC	48 Areas BLC
Motion Detection	48 Areas
DNR	2D/3D DNR
Camera ID	Max Character Title
Lens	3.6mm
Power Supply	12VDC
Power Consumption	120mA
Operating Temperature	14°F - 122°F
Storage Temperature	-4°F - 140°F



Features:

- 1/3" Super HAD II CCD
- 600TVL Resolution
- Advanced Starlight Sensing
- Low Lux Rating: Color 0.03, B/W 0.001
- Advanced 3D DNR for noise control
- Digital Slow Shutter, up to 128x
- Ideal for low light condition



BC7109AVA

Eagle-i™ Super Night Vision Vandal Proof Camera

Specifications:

Image Sensor	1/3" Sony Super HAD II CCD
Effective Pixels	768H x 494V
Resolution	Color 600TVL
Minimum Illumination	Color 0.03Lux, Mono 0.001 Lux
Shutter Speed	1/60 ~ 1/100,000
Scanning System	2:1 Interlaced Scanning
Sense Up	Max 128x
S/N Ratio	more than 50dB
Digital Wide Dynamic	WDR adjustable
Privacy Zone	4 areas
AGC	On/Off
BLC	48 zones
Motion Detection	48 zones
Digital Zone	128x
DNR	2D/3D DNR
Sync	Internal
AWB	ATW/Fluorescent/Manual
Reverse Function	Horizontal / Vertical
Negative Function	Available
Power Supply	12VDC/24VAC 2.5W
Operating Temperature	-14°F - 131°F
Storage Temperature	-40°F - 150°F





Advanced 600 TV Line Cameras

Bolide's 600TVL cameras are high resolution color surveillance camera powered by latest image sensor. These cameras deliver excellent images for monitoring and recording. With built-in Day & Night function and a low light function, these cameras are able to offer clear images 24 hours a day.



BC1609-IRAD

600TVL Outdoor Eyeball IR Camera

Features:

- 1/3" high resolution color CCD
- 600 TV line resolution
- High power night vision LED
- LEDs effective range 75 ft
- Auto AGC, WB and BLC
- IP66 rated housing
- Great for low light outdoor application

Specifications:

Imaging Sensor	1/3" High Resolution Color CCD
Effective Pixel	811(H) x 508(V)
Signal System	NTSC
Shutter Speed	1/60 ~ 1/100000s
S/N Ratio	More than 48dB (AGC OFF)
Video Output	1.0 Vp-p, 75 ohm
Resolution	Color: 600TVL
Minimum Illumination	0 lux (IR On)
Sync System	Internal
IR Leds	24pcs 850nm
IR Effective Range	75ft
Lens	3.6mm
Exposure Mode	EE
AGC	Auto
BLC	Auto
White Balance	Auto
Mini Focal Distance	20CM
Gamma Correction	0.45
Housing	IP66
Operating Temperature	-14°F ~ 120°F, 20-80%
Power Supply	12VDC
Dimension	80Ømm x 94mm



BC6609-IRODVA28

600TVL Outdoor Eyeball Vari-Focal IR Camera

Specifications:

Imaging Sensor	1/3" High Resolution Color CCD
Effective Pixel	811(H) x 508(V)
Signal System	NTSC
Shutter Speed	1/60 ~ 1/100000s
S/N Ratio	More than 48dB (AGC OFF)
Video Output	1.0 Vp-p, 75 ohm
Resolution	Color: 600TVL
Minimum Illumination	0 lux (IR On)
Sync System	Internal
IR Leds	36pcs 850nm
IR Effective Range	90ft
Lens	2.8 - 12mm
Exposure Mode	EE
AGC/BLC	Auto
White Balance	Auto
Mini Focal Distance	10CM
Gamma Correction	0.45
Housing	IP66
Operating Temperature	-14°F ~ 120°F, 20-80%
Power Supply	12VDC
Dimension	119Ømm x 100mm



Features:

- 1/3" high resolution color CCD
- 600 TV line resolution
- High power night vision LED
- LEDs effective range 90 ft
- Auto AGC, WB and BLC
- IP66 rated housing
- Vari-focal 2.8 - 12mm
- Great for low light outdoor application

BC1609AVAIR28

600TVL Outdoor Vandal Proof IR Dome Camera

Specifications:

Imaging Sensor	1/3" High Resolution Color CCD
Effective Pixel	811(H) x 508(V)
Signal System	NTSC
Shutter Speed	1/60 ~ 1/100000s
S/N Ratio	More than 48dB (AGC OFF)
Video Output	1.0 Vp-p, 75 ohm
Resolution	Color: 600TVL
Minimum Illumination	0 lux (IR On)
Sync System	Internal
IR Leds	21pcs 850nm
IR Effective Range	75ft
Lens	2.8 - 12mm
Exposure Mode	EE
AGC/BLC/AWB	Auto
Mini Focal Distance	20CM
Gamma Correction	0.45
Housing	IP66
Operating Temperature	-14°F ~ 120°F, 20-80%
Power Supply	12VDC
Dimension	149Ømm x 99mm



Features:

- 1/3" high resolution color CCD
- 600 TV line resolution
- High power night vision LED
- LEDs effective range 75 ft
- Auto AGC, WB and BLC
- Vandal Proof IP66 rated housing
- Vari-focal 2.8 - 12mm
- Great for low light outdoor application

BC6635

600TVL IR Bullet Camera

Specifications:

Imaging Sensor	1/3" High Resolution Color CCD
Effective Pixel	811(H) x 508(V)
Signal System	NTSC
Shutter Speed	1/60 ~ 1/100000s
S/N Ratio	More than 48dB (AGC OFF)
Video Output	1.0 Vp-p, 75 ohm
Resolution	Color: 600TVL
Minimum Illumination	0 lux (IR On)
Sync System	Internal
IR Leds	23pcs
IR Effective Range	65ft
Lens	3.6mm
IR Power On	CDS Auto Control
AGC/BLC/AWB	Auto
Gamma Correction	0.45
Housing	IP66
Operating Temperature	-14°F ~ 120°F, 20-80%
Power Supply	12VDC
Dimension	50mm x 85mm x 60mm



Features:

- 1/3" high resolution color CCD
- 600 TV line resolution
- High power night vision LED
- LEDs effective range 65 ft
- IP66 rated housing
- Great for low light outdoor application

BC6636-28

600TVL IR Vari-Focal Bullet Camera

Specifications:

Imaging Sensor	1/3" High Resolution Color CCD
Effective Pixel	811(H) x 508(V)
Signal System	NTSC
Shutter Speed	1/60 ~ 1/100000s
S/N Ratio	More than 48dB (AGC OFF)
Video Output	1.0 Vp-p, 75 ohm
Resolution	Color: 600TVL
Minimum Illumination	0 lux (IR On)
Sync System	Internal
IR Leds	36pcs
IR Effective Range	100ft
Lens	2.8-12mm
IR Power On	CDS Auto Control
AGC/BLC	Auto
IR-Cut filter	Built-in
White Balance	Auto
Gamma Correction	0.45
Housing	IP66
Operating Temperature	-14°F ~ 120°F, 20-80%
Power Supply	12VDC/24VAC
Dimension	78mm x 72mm x 125mm



Features:

- 1/3" high resolution color CCD
- 600 TV line resolution
- High power night vision LED
- LEDs effective range 100 ft
- Dual Voltage 12VDC/24VAC
- IP66 rated housing
- Great for low light outdoor application



BC3635H

600TVL IR Bullet Camera

Specifications:

Imaging Sensor	1/3" SONY Super HAD CCD
Effective Pixel	768(H) x 494(V)
Sensor Area	4.9mm x 3.7mm
Shutter Speed	1/60 ~ 1/100000s
S/N Ratio	More than 48dB (AGC OFF)
Video Output	1.0 Vp-p, 75 ohm
Resolution	Color: 600TVL
Minimum Illumination	0 lux (IR On)
Sync System	Internal
IR Leds	850nm, 100ft
Lens	3.6mm
AGC/BLC/AWB	Auto
Gamma Correction	0.45
Housing	IP66
Operating Temperature	-14°F ~ 120°F, 20-80%
Power Supply	12VDC, 5.4W
Dimension	73mm x 60mm x 88mm (WxHxD)



Features:

- 1/3" Sony Super HAD CCD
- 600 TV line resolution
- LEDs effective range 100 ft
- IP66 rated housing
- Great for low light outdoor application



BC6637

600TVL High Power IR LEDs Vari-Focal Bullet Camera

Specifications:

Imaging Sensor	1/3" High Resolution Color CCD
Effective Pixel	811(H) x 508(V)
Shutter Speed	1/60 ~ 1/100000s
S/N Ratio	More than 48dB (AGC OFF)
Video Output	1.0 Vp-p, 75 ohm
Resolution	Color: 600TVL
Minimum Illumination	0 lux (IR On)
Sync System	Internal
IR Leds	2 High Power LEDs
IR Effective Range	165ft
Lens	6-60mm
IR Power On	CDS Auto Control
AGC/BLC	Auto
IR-Cut filter	Built-in
White Balance	Auto
Gamma Correction	0.45
Housing	IP66
Operating Temperature	-14°F ~ 120°F, 20-80%
Power Supply	12VDC/400mA
Dimension	270mm x 93mm x 81mm
Weight	800g



Features:

- 1/3" high resolution color CCD
- 600 TV line resolution
- High power night vision LED
- LEDs effective range 165 ft
- IP66 rated housing
- IR cut-filter built-in for best night image
- Great for low light outdoor application



WDR - Wide Dynamic Range Cameras

Bolide's WDR cameras are high resolution color surveillance camera powered by Pixim® Seawolf. With Pixim® Wide Dynamic Range, these cameras deliver excellent images under strong back-lit lighting conditions with built-in Day & Night function and a low light function to render clear images 24 hours a day. The new Seawolf deliver accurate images in real-world scenes, night and day, even under challenging, mixed lighting condition.

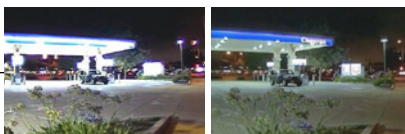
Powered by
PIXIM®
SEAWOLF

Dark Scenes



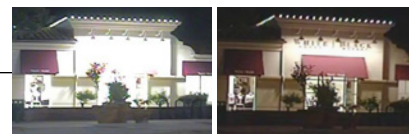
In very dark scenes, Seawolf avoids image hot spots and captures clear highlight and shadow detail in black and white.

Dimly Lit Scenes



Camera powered by Seawolf capture critical details and true color in difficult, dimly lit scenes, avoiding color fade common with analog CCD cameras.

Mix Lighting Scenes



CCD Cameras can't adjust to highlights and lowlights in the same scene, a common scenario in security applications where light sources are directly visible to the camera. Seawolf powered cameras capture the entire picture even in the most challenging, mixed lighting conditions.



BC2002WDSA

Wide Dynamic Range Seawolf Box Camera

Specifications:

Image Sensor	Pixim® Seawolf
Effective Pixels	768(H) x 548(V)
Scanning System	525 Lines 2:1 interlace
Resolution	690 HTVL Effective
Min. Illumination	0.1 lux / F1.2, 0.012 lux / F1.2 (Slow Shutter)
Shutter Speed	1/60 ~ 1/100,000 sec
S/N Ratio	Dynamic Range 102dB, Typical 120dB Max
Sync System	Internal / Line Lock
ICR Filter	Built-in
Lens	C/CS Mount
White Balance	ATW / AWB
BNC Video Output	CVBS 1.0 Vp-p / 75Ω
IRIS Control	DC / Video
Power Supply	12VDC/24VAC
Power Consumption	4W Max
Size	2.3" x 1.4" x 1.2" (WxDxH)
Weight	500g
Operating Temperature	14°F - 122°F
Operating Humidity	-4°F - 150°F



Powered by
PIXIM®
SEAWOLF



Features:

- Pixim Seawolf Image Sensor
- 690 TVL, 0.1Lux
- Wide Dynamic Range function
- DNR, Motion Detection, Privacy Masking built-in
- Dual Voltage 12VDC/24VAC
- C/CS Mount Lens

iPac
IP Systems

Digital Video
Recorders

PTZ & Matrix
Systems

Security
Cameras

Security
Monitors

Covert Cameras

Security
Accessories

KPC-600WDSA

Color Pinhole Pixim WDR Board Camera

Features:

- High Resolution CCD
- Widest Dynamic Range (120dB max)
- 0.1 Lux Sensitivity (Day & Night)
- Advance & Compact design
- Standard Pinhole Lens: 3.7mm
- Ideal for ATM's, Government facilities and more

Specifications:

Model No.	KPC-600WDSA
Image Sensor	Pixim® Seawolf
Effective Pixel	768(H) x 548(V)
Resolution	690TVL
Shutter Speed	1/60 ~ 1/100,000
S/N Ratio	102dB, 120dB Max
Sync. System	Internal
White Balance	ATW / AWB
BNC Video Output	CVBS 1.0 Vp-p / 75Ω
Min. Illumination	0.1 lux (Day & Night)
Lens	3.7mm Pinhole
Power	12VDC, > 250mA
Size	36mm x 36mm
Weight	200g
Operating Temperature	14°F - 122°F
Operating Humidity	-4°F - 150°F



Powered by
PIXIM®
SEAWOLF



BC5009WD

WDR Color Dome Camera

Features:

- Pixim DPS (Digital Pixel System)
- 550 Lines of Resolution
- 0.5 lux sensitivity (Day & Night)
- Wide Dynamic Range 120dB
- Adjustable auto gain control, OSD

Specifications:

Image Device	1/3" Digital Pixel System
Resolution	550 TV Lines
Dynamic Range	120dB Maximum
SYNC System	Internal
Scanning System	2:1 Interface
Min. Illumination	0.5 lux
White Balance	AWB/ATW/Manual Selectable
Lens	3.6mm
Power Supply	12VDC <4W (Max)
Operating Temperature	14°F - 122°F
Operating Humidity	-4°F - 150°F



BC1009AVAWD

Vandal Proof Wide Dynamic Range Dome Camera

Features:

- 1/3" DPS (Digital Pixel System)
- 540 TVL, 0.08 Lux
- Wide Dynamic Range function
- Day/Night function
- On-screen menus for camera settings

Specifications:

Image Sensor	1/3" DPS (Digital Pixel System)
Effective Pixels	720H x 540V
Scanning System	525 Lines 2:1 interlace
Resolution	540 TV Lines Resolution
Shutter Speed	1/60 ~ 1/100,000 sec
S/N Ratio	> 50dB
Min. Illumination	0.08 Lux/F1.2
Day & Night, WDR	On/Off
White Balance	Auto 2000K to 11,000K
Lens	3.6mm
Shutter	Electronic/Manual/Digital
Power Supply	12VDC/500mA
Power Consumption	280mA or Less



BC1009AVAWDIRSA

Vandal Proof Seawolf WDR IR Dome Camera

Features:

- Pixim Seawolf Image Sensor
- 690 TVL, 0Lux
- Wide Dynamic Range function
- IR with Infrared Cut-filter
- DNR, Motion Detection, Privacy Masking built-in
- 2.6 ~ 10mm Vari Focal Lens

Specifications:

Image Sensor	Pixim® Seawolf
Effective Pixels	768(H) x 548(V)
Scanning System	525 Lines 2:1 interlace
Resolution	690 HTVL Effective
Min. Illumination	0 lux IR On
Shutter Speed	1/60 ~ 1/100,000 sec
S/N Ratio	Dynamic Range 102dB, Typical 120dB Max
Sync System	Internal / Line Lock
Lens	2.6-10mm
IR LED	21 pcs IR Leds with ICR
White Balance	ATW / AWB
BNC Video Output	CVBS 1.0 Vp-p / 75Ω
IRIS Control	DC / Video
Power Supply	12VDC/24VAC
Power Consumption	4W Max
Size	5.9"Ø x 5"
Weight	1.3kg
Operating Temperature	14°F - 122°F
Operating Humidity	-4°F - 150°F



Powered by
PIXIM®
SEAWOLF



KPC-600B

Color Spy Camera with Case

Specifications:

Image Sensor	1/3" Color CCD
Effective Pixels	512H x 492V
Scanning System	525 Lines 2:1 interlaced
Resolution	420~450 TV Lines Resolution
Shutter Speed	1/60 ~ 1/100,000
S/N Ratio	more than 48dB
Sync. System	Internal
Min. Illumination	0.5 lux
White Balance	Automatic
Power Supply	12VDC
Power Consumption	120mA or less
Audio Output	RCA



Features:

- Micro Compact design
- 420~450 TV Lines Resolution
- Built-in microphone for audio monitoring
- Plug and play cables
- Mini mounting bracket included
- Dimensions: 1.41" x 1.41"
- Pinhole Board Lens: 3.6mm



BC2033H

Weather-Proof Miniature Color Bullet Camera

Specifications:

Model No.	BC2033H
Image Sensor	1/3" Sony Super HAD CCD
Effective Pixels	510H x 492V
Scanning System	525 Lines 2:1 interlace
Resolution	550 Lines
Shutter Speed	1/60 ~ 1/100,000
S/N Ratio	> 48dB
Sync. System	Internal
Min. Illumination	0.2 Lux
Power Supply	12VDC
Power Consumption	110mA or less
Dimension	2.75" x 0.91"



Features:

- 550 TV Lines Resolution, 0.2 Lux
- Operating Temp: 14°F ~ 122°F
- 1/4" Sony Super HAD CCD
- S/N Ratio: > 48dB
- Aluminum Weatherproof Housing
- Shutter Speed: 1/60 ~ 1/100,000 sec



BC3034H

High Resolution Day and Night Pinhole Bullet Camera

Specifications:

Image Sensor	1/3" Sony High Resolution CCD
Effective Pixels	510(H) x 492(V)
Resolution	550 TV Lines Resolution
Min. Illumination	0.05 lux/F1.2
S/N Ratio	> 48dB
Shutter Speed	1/60 ~ 1/100,000 sec
A.G.C.	On/Off
Day/Night	Yes
B.L.C.	On/Off
Day & Night Function	Built-in
Video Out	BNC, 1.0Vp-p (75ohm)
Power Consumption	150mA or less



Features:

- 1/3" Sony CCD
- 550 TV Lines of Resolution
- BLC & AGC Control
- Excellent Color Reproduction
- Remarkable Sensitivity / Auto White Balance
- Day & Night Function

BC6035B/H

3-Axis In/Outdoor IR Bullet Camera

Features:

- 1/4" Sony Super HAD CCD
- 480 TV Lines Resolution
- 0 lux IR On
- Auto BLC, AGC and White Balance
- 3-axis bullet
- 23 Leds with 75ft effective distance

Specifications:

Imaging Sensor	1/4" Color Sony HAD CCD
Total Pixel	811(H) x 508(V)
Sensing Area	4.9mm x 3.7mm
Sync. System	Internal
Resolution	480 TVL
Lens	2.8 ~ 12 Lens
Mini Focal Distance	20cm
Exposure Mode	EE
WB/AGC/BLC	Auto
S/N Ratio	48dB (AGC off)
Electronic Shutter	1/60 ~ 1/100,000 sec
Video Output	1.0 Vp-p, 75 ohm
Minimum Illumination	0 lux (IR On)
IR Leds	23 units, 850nm
IR Distance	75ft
Gamma Correction	0.45
Housing	IP66
Power	12VDC
Operating Temperature	-4°F ~ 122°F



BC6036HVA/12/24

3-Axis In/Outdoor 4.0-9.0mm Vari-Focal IR Bullet Camera

Features:

- 1/3" Sony Super HAD CCD
- 520 Lines of Resolution, 0 lux
- Auto Gain Control
- 36 High Powered IR Leds, Up to 100ft
- Easy adjustable vari-focal lens
- 4.0mm ~ 9.0mm vari-focal

Specifications:

Image Sensor	1/3" Sony Super HAD CCD
Effective Pixels	510H x 492V
Resolution	520TV Lines
Lens	4.0 ~ 9.0mm Manual Focus
Sync. System	Internal
S/N Ratio	more than 48dB
Min. Illumination	0 lux
Electronic Shutter Speed	1/60 ~ 1/100,000
White Balance	Auto
IR	36 IR Leds
IR Range	100ft
Power Supply	12VDC / 24VAC
Construction	Aluminum



BE1025-AIR

4-9mm Focus Free Vari-Focal IR Bullet Camera

Specifications:

Image Sensor	1/3" Sony Super HAD CCD
Effective Pixels	510H x 492V
Resolution	520TV Lines
Lens	4.0 ~ 9.0mm Adjustable
Sync. System	Internal
S/N Ratio	more than 48dB
Focus	Auto / Always Focus
Min. Illumination	0 lux
Electronic Shutter Speed	1/60 ~ 1/100,000
White Balance	Auto
A.G.C.	Auto
Power Supply	12VDC
Construction	Aluminum with silver base
Housing	Outdoor Weatherproof
ID	Adjustable
Operating Temperature	-14°F ~ 120°F



Features:

- 1/3" Sony Super HAD CCD
- 520 TVL, 0 Lux
- 4.0-9.0mm Vari Focal w/ Motorized Auto Focus
- Built-in RS 485 for zoom in/out operation
- 36 High Power IR LEDs, Up to 100ft
- FOCUS FREE auto iris motorized zoom lens
- Weatherproof housing for outdoor operation

BC1009-3.6

Color Dome Camera

Specifications:

Image Sensor	1/3" Sony CCD
Effective Pixels	510H x 492V(250k Pixels)
Scanning System	525 Lines 2:1 interlace
Signal System	60Hz
Resolution	420 ~ 450 TV Lines
Shutter Speed	1/60 ~ 1/100,000
S/N Ratio	> 48dB
Sync. System	Internal
Video Output	1.0 Vp-p (75ohm)
Min. Illumination	0.5 Lux
Power Supply	12VDC
Power Consumption	120mA or Less



Features:

- 1/3" Interline Transfer CCD
- Color: 420-450 TV Lines Resolution, 0.5 Lux
- S/N Ratio: > 45dB
- Shutter Speed: 1/60 ~ 1/100,000 sec.
- Standard Lens: 3.6mm

BC1009IR

Color Infrared Dome Camera

Specifications:

Image Sensor	1/4" Sony CCD
Effective Pixels	510H x 492V(250k Pixels)
Scanning System	525 Lines 2:1 interlace
Resolution	420 ~ 450 TV Lines Resolution
Shutter Speed	1/60 ~ 1/100,000
S/N Ratio	> 48dB
Sync. System	Internal
Min. Illumination	0 Lux
Video Output	1.0 Vp-p (75ohm)
IR Range	12LEDs, 45FT
Power Supply	12VDC
Power Consumption	180mA or Less



Features:

- Built-in Infrared 12 LEDs
- High Resolution Sony CCD
- 420-450 TV Lines Resolution, 0 Lux
- IR Range: 45 FT.
- Impact Resistant Shell

BC3009HDN/12/24

High Resolution Day & Night Dome Camera

Features:

- 1/3" Sony High Resolution Color CCD
- 550 TV Lines Resolution
- 0.05 lux
- Standard 3.6mm Lens
- Remarkable sensitivity
- AWB (Auto White Balance)
- BLC (Backlight Compensation)
- AGC (Auto Gain Control)

Specifications:

Image Sensor	1/3" Sony High Resolution CCD
Effective Pixels	768H x 494V
Scanning System	525 Lines 2:1 interlace
Resolution	550 TV Lines Resolution
Shutter Speed	1/60 ~ 1/100,000
S/N Ratio	> 48dB
Day/Night	Auto, On/Off
Sync. System	Internal
Video Output	1.0 Vp-p (75ohm)
Min. Illumination	0.05 Lux
Power Supply	12VDC
Power Consumption	150mA or Less
Operating Temperature	-14°F ~ 120°F



BC3009HDNVA/12/24/2.6-6mm

High Resolution Day & Night Vari-Focal Dome Camera

Features:

- 1/3" Sony High Resolution Color CCD
- 550 Lines of Resolution, 0.05 lux
- Vari-Focal Lens 2.6mm ~ 6mm
- Available in two colors White or Black
- Remarkable sensitivity
- AWB (Auto White Balance)
- BLC (Backlight Compensation)
- AGC (Auto Gain Control)

Specifications:

Image Sensor	1/3" Sony High Resolution CCD
Effective Pixels	768H x 494V
Scanning System	525 Lines 2:1 interlace
Resolution	550 TV Lines
Min. Illumination	0.05 lux
Shutter Speed	1/60 ~ 1/100,000 sec
S/N Ratio	>48dB
Sync. System	Internal
Available Color	Black/White
Vari-Focal Lens	4.0~9.0mm
Power Supply	12VDC/24VAC
Power Consumption	180mA or Less
Operating Temperature	-14°F ~ 120°F



BC1009AVAIR

Outdoor Infrared Armored Dome Camera

Specifications:

Image Sensor	1/3" Sony HQ1 Color CCD
Effective Pixels	768H x 494V
Scanning System	2:1 interlace
Resolution	520 TV Lines Resolution
Shutter Speed	1/60 ~ 1/100,000 Sec
S/N Ratio	50dB or More (AGC Off)
Sync. System	Internal
Min. Illumination	0.2 Lux, 0 Lux IR On
IR Range	65ft, 21LEDs
Gamma Characteristic	0.45
Consumption Current	200mA (LED Off), 600mA (LED On)
Power Supply	12VDC
Vari-Focal	4~9mm Auto Iris Lens
Operation Temperature	-14°F ~ 122°F

BC3009AVA

Vandal Proof Day & Night Dome Camera

Specifications:

Image Sensor	1/3" Sony CCD
Effective Pixels	510H x 492V
Scanning System	525 Lines 2:1 interlace
Resolution	520 TV Lines Resolution
Shutter Speed	1/60 ~ 1/100,000
S/N Ratio	>48dB
Sync. System	Internal
Min. Illumination	0.05 Lux
Day & Night	Yes
Power Supply	12VDC/24VAC
Housing	IP67 Weather Resistant Vandal Proof Shell
Dimension	5.59" x 3.34"

BC3009AIR

3 Axis Armored In/Outdoor Infrared Dome Camera

Specifications:

Image Sensor	1/3" Sony CCD
Effective Pixels	510H x 492V(250k Pixels)
Scanning System	525 Lines 2:1 interlace
Resolution	520 TV Lines Resolution
Shutter Speed	1/60 ~ 1/100,000 sec.
S/N Ratio	>48dB
Sync. System	Internal
Min. Illumination	0 Lux
IR Range	23LEDs, 60ft
Housing	IP66 Weatherproof
BLC/White Balance	Auto
Lens	3.6mm
Power Supply	12VDC



Features:

- 1/3" Sony HQ1 Color CCD
- 520 TV Lines Resolution
- 21 LEDs, 0 Lux, up to 65ft
- Varifocal Lens: 4~9mm with Auto Iris
- Polycarbonate Vandal & IP66 Weather Proof
- 3 Axis Mounting



Features:

- 1/3" Sony CCD
- Up to 520 TV Lines Resolution
- Minimum Illumination 0.05 lux
- Vandal Proof Housing
- Built-in Vari-Focal Lens 4~9.0mm
- Auto Iris and BLC



Features:

- 1/3" Sony Color CCD
- 520 Lines of Resolution, 0 lux
- Vandal Proof Shell
- 3-axis design for easy installation
- IP66 Weather Proof Housing
- IR Range: up to 60ft

BC1009S/IRAD

Weather-Proof Armor IR Color Dome Camera

Features:

- 1/3" Sony Color CCD
- 480 Lines of Resolution
- 0 lux
- Vandal Proof Shell
- IP66 Weather Proof Housing
- IR Range: up to 60ft
- 23 LEDs for night operation

Specifications:

Image Sensor	1/3" Sony Super HAD CCD
Effective Pixels	510H x 492V(250k Pixels)
Scanning System	525 Lines 2:1 interlace
Resolution	480 TV Lines Resolution
Shutter Speed	1/60 ~ 1/100,000 sec.
S/N Ratio	>48dB
Sync. System	Internal
White Balance/AGC	Auto
Lens	3.6mm
Min. Illumination	0 Lux
IR Range	23LEDs, 60ft
Power Supply	12VDC
Power Consumption	150mA or Less
Operating Temperature	-14°F ~ 122°F



BC1009IB-IROD-B/W

Indoor Eyeball Color Dome Camera

Specifications:

Imaging Sensor	1/4" Color Sony CCD
Total Pixel	811(H) x 508(V)
Signal System	NTSC
Sensing Area	4.9mm x 3.7mm
Sync. System	Internal
Resolution	480 TVL
Lens	3.6mm Lens
Mini Focal Distance	20cm
Exposure Mode	EE
WB/AGC/BLC	Auto
S/N Ratio	48dB (AGC off)
Electronic Shutter	1/60 ~ 1/100,000 sec
Video Output	1.0 Vp-p, 75 ohm
Minimum Illumination	0 lux (IR On)
IR Leds	23 units, 850nm
IR Distance	75ft
Gamma Correction	0.45
Housing	IP66
Power	12VDC
Operating Temperature	-4°F ~ 122°F



Features:

- 1/4" Sony Super HAD CCD
- 480 TV Lines Resolution
- 0 lux IR On
- IR Corrected Lens
- Auto BLC, AGC and White Balance
- 3-axis eyeball design
- 23 Leds with 75ft effective distance
- 12VDC power



BC1009B/IRAD

Armored Eyeball IR Dome Camera

Specifications:

Imaging Sensor	1/4" Color Sony CCD
Total Pixel	811(H) x 508(V)
Signal System	NTSC
Sensing Area	4.9mm x 3.7mm
Sync. System	Internal
Resolution	480 TVL
Lens	3.6mm Lens
Mini Focal Distance	20cm
Exposure Mode	EE
WB/AGC/BLC	Auto
S/N Ratio	48dB (AGC off)
Electronic Shutter	1/60 ~ 1/100,000 sec
Video Output	1.0 Vp-p, 75 ohm
Minimum Illumination	0 lux (IR On)
IR Leds	23 units, 850nm
IR Distance	50ft
Gamma Correction	0.45
Housing	IP66
Power	12VDC
Operating Temperature	-4°F ~ 122°F



Features:

- 1/4" Sony Super HAD CCD
- 480 TV Lines Resolution
- 0 lux IR On
- IR Corrected Lens
- Auto BLC, AGC and White Balance
- 3-axis eyeball design
- 23 Leds with 50ft effective distance
- 12VDC power



BC1009B/IRODVA28

Outdoor Eyeball Vari-Focal IR Dome Camera

Specifications:

Imaging Sensor	1/4" Color Sony CCD
Total Pixel	811(H) x 508(V)
Signal System	NTSC
Sensing Area	4.9mm x 3.7mm
Sync. System	Internal
Resolution	480 TVL
Lens	2.8 ~ 12.0mm Lens
Mini Focal Distance	20cm
Exposure Mode	EE
WB/AGC/BLC	Auto
S/N Ratio	48dB (AGC off)
Electronic Shutter	1/60 ~ 1/100,000 sec
Video Output	1.0 Vp-p, 75 ohm
Minimum Illumination	0 lux (IR On)
IR Leds	23 units, 850nm
IR Distance	75ft
Gamma Correction	0.45
Housing	IP66
Power	12VDC
Operating Temperature	-4°F ~ 122°F



Features:

- 1/4" Sony Super HAD CCD
- 480 TV Lines Resolution
- 0 lux IR On
- IR Corrected Lens
- Auto BLC, AGC and White Balance
- 3-axis eyeball design
- 35 Leds with 100ft effective distance
- IP 66 weatherproof housing
- 12VDC power

BC1009IB/VAIR

Indoor Vari-Focal IR Dome Camera

Features:

- 1/4" Sony Super HAD CCD
- 480 TV Lines Resolution
- 0 lux IR On with IR Corrected Lens
- 3-axis design
- 23 Leds with 75ft effective distance

Specifications:

Imaging Sensor	1/4" Color Sony CCD
Total Pixel	811(H) x 508(V)
Signal System	NTSC
Sensing Area	4.9mm x 3.7mm
Sync. System	Internal
Resolution	480 TVL
Lens	2.8mm ~ 12mm Lens
Mini Focal Distance	20cm
Exposure Mode	EE
WB/AGC/BLC	Auto
S/N Ratio	48dB (AGC off)
Electronic Shutter	1/60 ~ 1/100,000 sec
Video Output	1.0 Vp-p, 75 ohm
Minimum Illumination	0 lux (IR On)
IR Leds	23 units, 850nm, 75ft
Gamma Correction	0.45
Power	12VDC
Operating Temperature	-4°F ~ 122°F



BC1009B-AVAIR

Color Vandal Proof IR Dome Camera

Features:

- 1/4" Sony Super HAD CCD
- 480 TV Lines Resolution
- 0 lux IR On
- Auto BLC, AGC and White Balance
- 3-axis eyeball design
- 23 Leds with 75ft effective distance

Specifications:

Imaging Sensor	1/4" Color Sony CCD
Total Pixel	811(H) x 508(V)
Signal System	NTSC
Sensing Area	4.9mm x 3.7mm
Sync. System	Internal
Resolution	480 TVL
Lens	2.8 ~ 12 Lens
WB/AGC/BLC	Auto
S/N Ratio	48dB (AGC off)
Electronic Shutter	1/60 ~ 1/100,000 sec
Video Output	1.0 Vp-p, 75 ohm
Minimum Illumination	0 lux (IR On)
IR Leds	23 units, 850nm
IR Distance	75ft
Gamma Correction	0.45
Housing	IP66
Power	12VDC
Operating Temperature	-4°F ~ 122°F



BB1001/12/24

Advanced Dual Voltage Box Camera

Specifications:

Model Number	BB1001/12/24
Image Sensor	1/3" CCD
Effective Pixels	510H x 492V
Scanning System	525 Lines 2:1 Interlace
Resolution	420 TV Lines Resolution
Shutter Speed	1/60~1/100,000 sec
S/N Ratio	> 48dB
Sync System	Internal
Min. Illumination	0.2 lux
Video Output	1.0 Vp-p(75ohm)
Auto Gain Control	On/Off Optional
Electronic Shutter Control	EE/AI Switchable
Power Supply	12VDC / 24VAC



Features:

- Built-in Line Lock
- Dual voltage: 12VDC or 24VAC
- Video Output: 1.0Vp-p, 75 ohm BNC
- Back Light Compensation: On/Off Optional
- Shutter Speed: 1/60 ~ 1/100,000 sec
- C/CS Mount

BC2002HQDN/12/24

Sony HQ High Resolution Box Camera

Specifications:

Image Sensor	1/3" Sony Super HAD CCD
DSP	Sony HQ1
Effective Pixels	811H x 508V
Scanning System	2:1 Interlace
Resolution	540 TV Lines Resolution
Shutter Speed	1/60~1/100,000 sec
S/N Ratio	> 50dB (AGC OFF)
Sync System	Internal
Min. Illumination	0.14 lux / F1.0
A.G.C. / B.L.C	On / Off
Auto White Balance	AWB
Power Supply	12VDC / 24VAC, 2.0W
Dimensions	2.36" x 1.97" x 3.94"



Features:

- 1/3" Sony Super HAD CCD
- 540 TVL, 0.14 Lux
- DSP: Sony HQ1
- Automatic Day & Night Function
- Dual Voltage 12VDC / 24VAC
- BLC, AGC and Flickerless control

BC3002HDN/12/24

550 TVL High Resolution Box Camera

Specifications:

Image Sensor	1/3" Sony High Resolution CCD
Effective Pixels	510(H) x 492(V)
Resolution	550 TV Lines Resolution
Min. Illumination	0.05 lux/F1.2
S/N Ratio	>48dB
Electric Shutter	EE/AI Switchable
A.G.C. / B.L.C.	On/Off
Day/Night	Yes
Video Out	BNC, 1.0Vp-p (75ohm)
Power Supply	12VDC / 24VAC
Power Consumption	150mA or less



Features:

- 1/3" Sony CCD
- 550 TV Lines of Resolution
- BLC & AGC Control
- Excellent Color Reproduction
- Remarkable Sensitivity / Auto White Balance
- Dual Voltage 12VDC ~ 24VAC

BC2002HQDNVL

Highway Surveillance License Plate Camera

Specifications:

Image Sensor	1/3" Sony Super HAD CCD
DSP	Sony HQ1
Effective Pixels	811H x 508V
Scanning System	2:1 Interface
Resolution	540 TVL
S/N Ratio	> 50dB (AGC OFF)
Sync System	Internal
Min. Illumination	0.15 lux / F1.0
Electronic Shutter Speed	AES ON, AES OFF, 1/100(120) sec. FL: 1/130sec, 1/160sec, 1/210sec, 1/280sec, 1/360sec, 1/420sec, 1/560sec
B.L.C.	On / Off
A.G.C.	On / Off
Video Output	1Vp-p Composite
Power Consumption	250mA (3.0W)
Power Supply	12VDC / 24VAC
Operation Environment	- 10°C ~ 50°C, RH 80% (Max.)
Dimensions	2.4" x 2" x 3.9"



"Capture Up to 90 mph"

Features:

- 1/3" Sony Super HAD CCD
- 540 TVL, 0.15 Lux
- DSP: Sony HQ1
- Automatic Day & Night Function
- Dual Voltage 12VDC/24VAC
- Built-in Intelligent Shutter (CAR-DC Iris Control) Capturing moving target up to 90mph

BC2035/HQDNVLIR

Outdoor **Anti-Headlight** License Plate Infrared Bullet Camera

Features:

- 1/3" Sony Super HAD CCD
- Sony HQ1, 540 TVL, 0 Lux
- 6 Pcs Super High Power Reflection LEDs + 24 IR LEDs
- Anti-Head Light Technology for night operation
- External Varifocal Lens Adjustment
- User Friendly DC Level & High Power IR LEDs Adjustments
- 3-axis Adjustable & Cable Management Bracket
- Built-in DNR & Sense Up Functions

Specifications:

Image Sensor	1/3" Sony Super HAD CCD
Effective Pixels	795H x 596V
Scanning System	525 Lines 2:1 interlace
Resolution	540 TVL
Shutter Speed	1/60 ~ 1/100,000
S/N Ratio	more than 50dB
Sync. System	Internal
Min. Illumination	0 Lux (IR On)
IR Range	Outdoor 100ft / Indoor 150ft, 30 units
Water Resistant	IP66
Lens	Aspherical 3.8mm ~ 9.5mm
DNR; Sense Up	Automatic
Power Supply	12VDC/24VAC, 90%RH
Dimension	3.7"x 6.5"



Vari-Focal Adjustment



**License Plate Camera with
Anti Headlight Technology**

iPac
IP Systems

Digital Video
Recorders

PTZ & Matrix
Systems

Security
Cameras

Security
Monitors

Covert Cameras

Security
Accessories

Memo

Lined area for writing a memo.

iPac
IP Systems

Digital Video
Recorders

PTZ & Matrix
Systems

Security
Cameras

Security
Monitors

Covert Cameras

Security
Accessories

SECURITY MONITORS



Video Wall

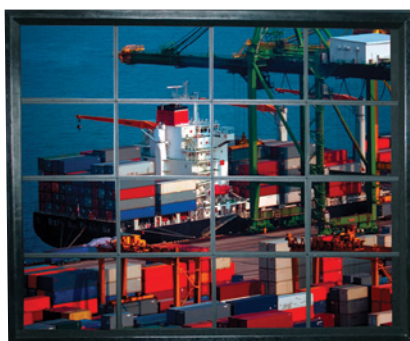
Multipurpose Surveillance Video Display

Features:

- Customized Panel Design: 2x2, 3x3, 4x4 and more
- High Brightness
- High Contrast up to 1500:1
- Wide View Angle up to 170 degrees
- Designed for 24/7 security monitoring
- 120Hz Frequency Multiplication Refreshing Frequency
- More than 50,000 Hours of life-span of the LCD screen backlight
- Ultra Slim Edge Design
- Multiple display image signal source: BNC, VGA, S-Video etc.
- Any Combination of Display: Full Screen, Single and Combination
- Superior Image Display Function: Image Cruise, Superposition, Drag etc.
- Universal Power Supply

Specifications:

Panel Size	19"	40"	46"
W/H Ratio	5:4	16:9	16:9
Brightness	450 cd/m ²	1000 cd/m ²	1000 cd/m ²
Resolution (per unit)	1280 x 1024	1366 x 768	1366 x 768
Contrast	1000:1	1500:1	1500:1
Definition (per unit)	1080i	1080p	1080p
Dimension (mm)	396(H)x324(W)	911.7(H)x524.2(W)	1047.4(H)x600.6(W)
Weight	2.3Kg	12.5Kg	18.5Kg
Color	16.7M	16.7M	16.7M
Viewing Angle	170° / 160°	178° / 178°	178° / 178°
Response Time	8ms	8ms	8ms
LCD Panel Number	Any Row (M) x Any Column (N)		
Edge within panels	18mm	20mm	20mm
Installing Method	Key-free Hanging Method		
Cabinet Width	≤ 180mm	≤ 200mm	≤ 200mm
Cabinet Material	Complete steel stand frame, solid wood decoration frame		
Cabinet Size	Customized design: 2x2, 3x3, 4x4, 5x5, N x N		
Power Supply	100 ~ 230 (50/60Hz)		
Power (per unit)	35W	200W	200W
Operating Temp.	0°C ~ 60°C		
Operating Humidity	10 ~ 90%		
Input	BNC, VGA, S-Video (optional), DVI (optional)		
Video System	Worldwide Multiple Video System (NTSC/PAL)		



BE8019LCD

Security Grade LCD Monitor

The Bolide Security LCD series provides outstanding color and clarity. Our High Resolution LCD monitors are a perfect choice for the most sophisticated security, surveillance and monitoring operations.

Features:

- SXGA 1280x1024 Resolution
- Fast Response Time 8ms
- Viewing Angle 160°(H),160°(V)
- Built-in BNC Input and Looping Out

Specifications:

Model Number	BE8019LCD
Display Unit	4:3 TFT / LCD
Video Input/Output	1x D-15 Input, 1 x S-video , 2 x BNC Input/Output
Audio Input/Output	3 x Single Channel RCA Input /Output
Panel Control	Menu (Brightness, Contrast, Saturation, Hue), Volume, Channel Switch
Power Source	AC110V
Power Consumption	Maximum: 32W
Dimension(WxHxD)	458x372x84mm
Weight	5.5kg
Definition	1000TVL
Video System	Worldwide Multiple Video System (NTSC/PAL)
Max Resolution	UXGA 1280x1024
Audio Power	Max. 1.0W
Maximum Brightness	Enhanced 450cd/m
Maximum Contrast	700:1
Response Time	8ms
Visual Angle	160°,160°



Security
Accessories

Covert Cameras

Security
Monitors

Security
Cameras

PTZ & Matrix
Systems

Digital Video
Recorders

iPac
IP Systems

COVERT CAMERAS



Hidden Cameras with built in SD Card

"Ready to Go" Hidden Camera Packages with SD

With our new recording technology in our Hidden / Nanny Cameras, we have eliminated the need for additional recording equipment in a covert system. With Motion Detection and Time & Date Stamp features, the hidden camera records directly onto a SD card for storage and it can be easily played back on your PC. Several Styles and many features make this the perfect covert all in one solution at an affordable price. Our hidden cameras also have an option to convert to an Network Hidden Camera which allows you access your camera anywhere as long as you have Internet connection.

Features:

- Video System: NTSC
- Time & Date Stamp During Playback on Unit
- Video Format: AVI, SDK
- Video Recording Modes: Manual / Motion Activation
- IR remote control
- No Professional Installation Required

Optional Features:

- Wifi built-in
- Record on remote computer
- IP software compatible



Actual product(s) may vary from photo.



Now with Wifi.

USB Hidden Cameras

"Plug and Play" Hidden Camera Packages

USB version Hidden Camera built-in internal battery. Simply charge with your PC, once it is fully charged. These camera can be placed anywhere to record up to 8 hrs of video. After recording, just plug it to your PC for playback, no extra software needed. No professional installation is required.

Features:

- Video System: NTSC
- Record up to 8 Hrs Video with Internal Memory
- Video Format: AVI
- Video Recording Modes: Continuous
- USB Connection for PC and charging
- No External Power Required, Battery Operated
- No Professional Installation Required



Actual product(s) may vary from photo.

Premade Hidden Cameras

PIR Motion / Smoke Alarm / Recess Hidden Camera

BC1008 - PIR Hidden Camera

BC1008M - Working PIR Hidden Camera

BC1010 - Smoke Alarm Hidden Camera (Down/Side View)

BC1038 - Premade Smoke Alarm Hidden Camera

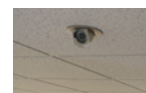
BC1020UFO - Recess Hidden Camera with IR

Specifications:

Image Sensor	1/4" CCD (Color)
Effective Pixels	512H x 492V (250k pixels)
Scanning System	525 Lines 2:1 Interlace
Resolution	420 -450 Lines (Color)
Shutter Speed	1/60 ~ 1/100,000 sec
S/N Ratio	More than 45 dB (AGC off)
Sync. System	Internal
Min. Illumination	0.5 Lux (Color)
White Balance	AWB
Power Consumption	100mA (DC12V)



BC1020UFO



**BC1008
BC1008M**



BC1010



BC1038

iPac
IP Systems

Digital Video
Recorders

PTZ & Matrix
Systems

Security
Cameras

Security
Monitors

Covert Cameras

Security
Accessories

Memo

Lined area for writing a memo.

SECURITY ACCESSORIES



iPac
IP Systems

Digital Video
Recorders

PTZ & Matrix
Systems

Security
Cameras

Security
Monitors

Covert Cameras

Security
Accessories



CCTV / Network Cables

Our professional grade cables are what you need to ensure an easy, cleaner and more efficient camera installation. We provide Quality Siamese RG59+18/2, RG59, RG6 along with Alarm Wire & CAT5/CAT6 cables. Bolide's NEW specialty IP Camera cable is perfect for IP cameras and PTZ applications. Most Bolide cables feature sequential foot markers and are UL certified. Available also in CMP and CMR rated.

CCA

(Copper Clad Aluminum) - CCA cables are cheaper in price but similar specification to pure copper cable. Bolide CCA cable's copper content are higher than standard which results in good performance and good quality compare to pure copper cable.



Riser type cables are engineered to prevent the spread of fire from floor to floor and are suitable for vertical shaft applications. The 'R' in CRM is for 'Riser'.



Cables meeting type CMP requirements are suitable for installation in ducts and plenums without the use of conduit. These cables are designed for fire resistance and low-smoke and toxin producing characteristics. The 'P' in CMP is for Plenum.



RG59 Professional Grade Zip/Combo Cable

Description	Part No.	Length (ft)	Dielectric	Conductor / Shielding	Jacket	Nom. Imp. (Ω)	Vel. of Prop.	Nominal Attenuation	
								Mhz	db/100ft
RG-59/U, 20 AWG Power 18-2, 18AWG	BP0033C-E	500ft	Gas Injected Foam PE	CCS+CCAM / 95% Coverage	75°C PVC U/V White	75	82%	1Mhz	0.33
RG-59/U, 20 AWG Power 18-2, 18AWG	BP0033CB-E	500ft			75°C PVC U/V Black			10Mhz	0.88
RG-59/U, 20 AWG Power 18-2, 18AWG	BP0033CB1000-E	1000ft			75°C PVC U/V White			50Mhz	1.85
RG-59/U, 20 AWG Power 18-2, 18AWG	BP0033CW1000-E	1000ft			75°C PVC U/V Black			100Mhz	2.51
								200Mhz	3.58
								400Mhz	5.29
								700Mhz	7.45
								900Mhz	8.7
								1000Mhz	9.31

RG59 Superior Grade Zip/Combo Cable





Description	Part No.	Length (ft)	Dielectric	Conductor / Shielding	Jacket	Nom. Imp. (Ω)	Vel. of Prop.	Nominal Attenuation	
								Mhz	db/100ft
RG-59/U, 20 AWG Power 18-2, 18AWG	BP0033/C	500ft	Gas Injected Foam PE	BC / CCA 95% Coverage	75°C PVC U/V White	75	82%	1Mhz 10Mhz 50Mhz 100Mhz 200Mhz 400Mhz 700Mhz 900Mhz 1000Mhz	0.33 0.88 1.85 2.51 3.58 5.29 7.45 8.7 9.31
RG-59/U, 20 AWG Power 18-2, 18AWG	BP0033/CB	500ft			75°C PVC U/V Black				
RG-59/U, 20 AWG Power 18-2, 18AWG	BP0033/CW1000	1000ft			75°C PVC U/V White				
RG-59/U, 20 AWG Power 18-2, 18AWG	BP0033/CB1000	1000ft			75°C PVC U/V Black				
RG-59/U, 20AWG Power 18-2, 18AWG	BP0033C/CMP	500ft			Plenum White				
RG-59/U, 20AWG Power 18-2, 18AWG	BP0033/CW1000/CMP	1000ft			Plenum White				

RG6 CATV Cable

Description	Part No.	Length (ft)	Color	Conductor / Shield	Nom. Imp. (Ω)
RG6/Quad, 18AWG	BP0033/RG6Q	1000ft	WHT	CCS / 2 x 60% Alum. Foil coverage	75




CAT5e Twisted Pair Networking Cable

Description	Part No.	Length (ft)	Color	Conductor/Jacket	Cable Characteristic	
					Parameter	dB
4-Pair 100Ω UTP 24AWG 350Mhz Swept Test	BP0033/Cat5e	1000ft	Grey Blue White Yellow	CCA / PVC	Attenuation NEXT PSNEXT ELFEXT PSELFEXT ACR PSACR RL	12.8 30.9 36.7 18.8 15.8 46.0 43.8 17.0
	BP0033/Cat5e/ CMR	1000ft	Grey Blue White Yellow	Riser Rated 		
	BP0033/Cat5e/ CMP	1000ft	Blue Grey	Plenum 		



CAT6 Twisted Pair Networking Cable

Description	Part No.	Length (ft)	Color	Conductor/Jacket	Speed
4-Pair 100Ω UTP 24AWG 550Mhz Swept Test	BP0033/Cat6	1000ft	Blue White	CCA / PVC	Gigabyte Ready
	BP0033/Cat6/ CMP	1000ft	Blue Grey	BC / Plenum 	
	BP0033/Cat6/ UCM	1000ft	Blue	CCU / PVC	



IP Camera Cable with Power

Description	Part No.	Length (ft)	Color	Conductor/Jacket	Cable Characteristic	
					Parameter	dB
4-Pair 100Ω UTP 24AWG 350Mhz Swept Test, Power 18-2, 18AWG	BP0033/IP	1000ft	White	CCA / PVC	Attenuation	12.8
					NEXT	30.9
					PSNEXT	36.7
					ELFEXT	18.8
					PSELFEXT	15.8
					ACR	46.0
					PSACR	43.8
					RL	17.0



Audio, Security & Alarm Cable

Description	Part No.	Length (ft)	Color	Conductor/Jacket
1 Pair, 18AWG/2	BP0033/18-2	1000ft	BLK	CCA / PVC
1 Pair, 22AWG/2	BP0033/22-2	1000ft	WHT	CCA / PVC
2 Pairs, 22AWG/4	BP0033/22-4	1000ft	WHT	CCA / PVC



RG59 Coaxial Premade Cable

25ft, 60ft, 100ft, 150ft & 200ft BNC Compressed with 18/2

Features:

- RG59 Coaxial Cable for Maximum Video Quality
- Ready for install
- Includes Power Connectors

BP0033/PM25 - 25FT RG59 Coaxial Premade Cable
BP0033/PM60 - 60FT RG59 Coaxial Premade Cable
BP0033/PM100 - 100FT RG59 Coaxial Premade Cable
BP0033/PM150 - 150FT RG59 Coaxial Premade Cable
BP0033/PM200 - 200FT RG59 Coaxial Premade Cable



BP0021/13"/39"/78"

Aluminum Mounting Bracket

Features:

- Heavy-duty in / outdoor
- Max-Load 8.5 lbs.
- Swivel Angle 360°

BP0021/13 (12"-15")
BP0021/39 (24"-42")
BP0021/78 (up to 78")



SC1/SC-C

Indoor Scanner

Features:

- Adjustable pins for movement
- Supporting base for installation to the ceiling
- Heavy duty motor
- Universal mounting for all types of cameras
- Ideal for indoor / outdoor use



BP0009

In/Outdoor Brackets

Features:

- Adjustable Pan and Tilt Head
- Maximum Adjustment: 360° pan/ 90° tilt
- Ideal for indoor / outdoor use



BP0020

Heavy Duty In/Outdoor Brackets

Features:

- Heavy-Duty Construction
- Adjustable Pan and Tilt Head
- Maximum Adjustment: 360° pan/ 90° tilt
- Ideal for indoor / outdoor use



BP0022

Professional CCTV Housing

Features:

- Heavy-Duty Beige Aluminum Construction
- 15" Environmental Housing
- Dimensions: 15.5"L x 5.8"W x 4.3"H (With Visor)
- Latch Adjustable Camera Tray

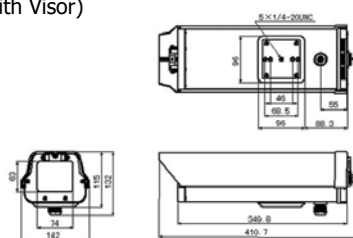


BP0034

Professional CCTV Housing with Heater and Blower

Features:

- Heavy-Duty Beige Aluminum Construction
- 15" Environmental Housing
- Dimensions: 15.5"L x 5.8"W x 4.3"H (With Visor)
- Latch Adjustable Camera Tray
- Heater & Blower Built-in



BP0022-POE

POE IP Camera IP66 Outdoor Housing

Features:

- POE standard meets IEEE-802.3af and IEEE2.3at
- Back Locking Latch
- Die cast Aluminum Construction
- Ideal for In/Outdoor Applications
- Extremely ease for Installation and Service
- IP66 Rated
- Long life expectancy Heater/Fan
- PoE Connections Inside Enclosure



iPacTM
Compatible



Specifications:

Exterior Dimension	17(L) x 5(H) x 6(W)
Interior Dimension	9(L) x 3.5(H) x 4(W)
Housing Security	Available, back locking latch
POE	POE 802.3af 48V DC standard
Bracket Size	11(L) x 3.25(H) x 4(W)
Data transmission rate	10/100 Mbps
Ethernet data line	TIA/EIA-568, Cat.-5 Cable
Hardware power grade	CLASS 4
Polarity of input voltage	RJ45_4,5(+),7,8(-) OR 1,2(+/-)3,6(-/+)
Fan start	Temperature above 122°F(PS:1)
Heater start	Temperature below 59°F(PS:2)
Max power consumption	13W
Stand by power consumption	500 mW
Operating Temperature	-22°F ~ 144°F
Humidity	0-95% (No Condensation)
Ethernet	Two RJ-45 (One Input, One Output)
Power indication	LED Indication



CCTV IR Illuminator

Turn your ordinary CCTV camera into a high powered night vision camera with Bolide's illuminator. An IR illuminator is a great idea for any camera that needs to see in the dark but where the installation of traditional lighting fixtures is not an option.



BE-IR60/45

High Power LED Infrared Illuminator

Specifications:

LED	198 PCS
LED Size	10/24u
Power	12VDC / 2000mA (IR Led Open)
IR Distance	125 Meter / 400 Feet
IR Angle	45°
Size	200 x 168 x 143 mm
Weight	1000g
Storage Temperature	-22°F ~ 140°F
Operation Temperature	14°F ~ 122°F



Features:

- Weather Resistance
- 198 pcs infrared LED
- IR range up to 450 feet
- 12VDC
- Ideal to transform any camera to night vision



BE-IR50/160

High Power Indoor LED Infrared Illuminator

Specifications:

LED	48 PCS
LED Size	10/24u
Power	12VDC / 1000mA (IR Led Open)
IR Distance	50 Meter / 160 Feet
Size	100 x 95 x 90 mm
Weight	700g
Storage Temperature	-22°F ~ 140°F
Operation Temperature	14°F ~ 122°F
Operation Temperature	14°F ~ 122°F



Features:

- Weather Resistance
- High power 48 pcs infrared LED
- IR range up to 160 feet
- 12VDC
- Ideal to transform any camera to night vision



BE-IR150/10

High Power LED Infrared Illuminator

Specifications:

LED	18 PCS
LED Size	10/24u
Power	12VDC / 1200mA (IR Led Open)
IR Distance	150 Meter / 500 Feet
Size	100 x 95 x 90 mm
Weight	700g
Storage Temperature	-22°F ~ 140°F
Operation Temperature	14°F ~ 122°F
Operation Temperature	14°F ~ 122°F



Features:

- Weather Resistance
- High power 18 pcs infrared LED
- IR range up to 500 feet
- 12VDC
- Ideal to transform any camera to night vision

Bolide Aspherical Lens

Professional Made in Japan Lens for CCTV Cameras

Mega Pixel Lens Specifications:

Model No.	Focal Length	Aperture	Mount	Angle of View
BP0019MP-8.0	3.5-8.0mm	1.4	CS	96° - 42°
BP0019MP-22.0	9.0-22mm	1.6	CS	40° - 18°
BP0019MP-550	5.0-50mm	1.6	CS	75° - 8.0°
BP0019MP-60.0	6.0-60mm	1.6	CS	76° - 8.8°

Fixed Lens Specifications:

Model No.	Focal Length	Aperture	Mount	Angle of View	M.O.D	Weight
BP0002-4	4.0mm	1.6	CS	70.6°	0.1m	51g
BP0002-6	6.0mm	1.6	CS	48.1°	0.1m	54g
BP0002-8	8.0mm	1.6	CS	33.4°	0.1m	59g
BP0002-12	12.0mm	1.6	CS	22.1°	0.1m	42g
BP0002-16.0	16.0mm	1.6	CS	17.1°	0.1m	47g
BP0002-25.0	25.0mm	1.6	CS	15.0°	0.1m	45g
BP0002-35.0	35.0mm	1.6	CS	13.8°	0.1m	48g

Vari-Focal Auto Iris Lens Specifications:

Model No.	Focal Length	Aperture	Mount	Angle of View	M.O.D	Weight
BP0019-2812	2.8-12mm	1.4	CS	95.6° - 22.1°	0.1m	156g
BP0019-3.5	3.5-8.0mm	1.4	CS	81.9° - 35°	0.1m	104g
BP0019-1230	12.0-30.0mm	1.6	CS	29.2° - 12.3°	0.3m	105g
BP0019-0660	6.0-60mm	1.6	CS	49.3° - 4.7°	0.2m	167g
BP0019-05100	5.0-100mm	1.8	CS	50.1° - 2.8°	0.2m	242g

Board Lens Specifications:

Model No.	Focal Length	Aperture	Mount	Angle of View	M.O.D	Weight
BP0001-3.6	3.6mm	2.0	12*0.5	92°	0.2	5
BP0001-6.0	6.0mm	2.0	12*0.5	54°	0.2	5
BP0001-8.0	8.0mm	2.0	12*0.5	43°	0.2	5
BP0001-12.0	12.0mm	2.0	12*0.5	29°	0.2	5



Professional Connectors

Model	Description
A. BP0005	RCA female couple
B. BP0006	RCA male to BNC female connector
C. BP0023	RCA female to BNC male connector
D. BP0026	BNC "T" connector
E. BP0027	BNC female to BNC connector
F. BP0028	Male RCA to male RCA coupler
G. BP0035	BNC Twist-On male connector
H. BP0036	BNC Crimp-On



Compression Connectors

Features:

- 360-degree true radial compression
 - No Guesswork involved
 - Water-proof ring included
- Available in RCA or BNC



BP0036/C



BP0023/C

CMP Connectors/Tie

Features:

- CMP Rated Connectors
- For use with CMP cable only
- CMP Rated Ties also available



Compression Tool

The Multi - Function Compression tool for BNC/RCA Connectors has a Durable Frame made out of black oxide steel along with interchangeable die sockets.

Features:

- Cable stripper
- Interchangeable die sockets
- Easy to use

*Please call about how to get your tools FREE



Power Accessories



Model	Description
A. BE-DC	DC Power Connector
B. BE-DC/Fem-Fem	DC Female to Female Connector
C. BE-DIS/Mal-2Fem	DC Male to 2 Female Pigtail
D. BE-DIS/Mal-2Fem	DC Female to 2 Male Pigtail
E. BE-DIS/Mal-4Fem	DC Male to 4 Female Pigtail
F. BE-DC/MM	DC Male to Male Coupler
G. BE-DC/F-4M	DC Female to 4DC Male
H. BP0029/12	24VAC to 12VDC Power Converter



BP0029

24 VAC Transformer 40VA

Features:

- 24VAC 40VA
- Ideal for PTZ camera



BP0004/S

12 VDC Switching Power

Features:

- 12VDC Switching Power
- Comes in 2 different Amps - 500mA or 1500mA
- Ideal for Bolide Cameras



BP0004/5-4

12 VDC Power Supplies

Features:

- 12VDC 5 AMPS
- Supports up to 4 cameras
- Ideal for multiple cameras or IR cameras



BP0004/5-PTC

4 Channel 12 VDC Power Supplies with PTC Fuse

Features:

- 4 Channel 5Amp Distribution System
- Built-in 6A PTC Fuse for Maximum Protection
- Adjustable Output Voltage for Long Distance Transition, DC12V to 13.8V

Specifications:

Output Current / Power	5A, 60W
Input Voltage	AC90V - AC264V
Output Voltage	Adjustable DC12V ~ 13.8V
Output Channel	4 Channels
Built-in PTC Fuse	6A
Working Temperature	-22°F ~ 115°F
Operation Temperature	14°F ~ 122°F



BP0049

24VAC Power Supplies



Features:

- Available in 100W/200W
- Support up to 18 Output
- On / Off switch
- Fault & AC on LEDs

BP0050

12VDC 5/10/29AMP



Features:

- 12VDC, available in 5, 10, 29 Amps
- Support up to 18 Output
- On / Off switch
- Fault & DC on LEDs



BE8016/P, BE8016/P4, BE8016PVD

Passive Video Baluns

Features:

- Passive Video Transceiver, No power required
- Color: 1000ft, B/W: 1500ft meters
- Use Cat5 UTP cables to transmit video signal
- Fast, easy installation and Superb quality

Specifications:

Frequency response	DC-8MHz
CMRR	60dB
Impedance	75Ω
Connection terminal	100Ω
Working Temperature	-22°F ~ 115°F
Operation Temperature	14°F ~ 122°F
Video System	NTSC, PAL, SECAM and CCIR
Dimension	51 x 30 x 17mm 104 x 80 x 27mm (4 channel)
Wire Requirement	UTP Cat5 or above



BE8016/AR, BE8016/AR4

Active Video Baluns

Features:

- Up to 4500 ft with Passive Baluns
- Up to 7200 ft with Active Baluns
- Use Cat5 UTP cables to transmit video signal
- Fast, easy installation and Superb quality
- Adopt differential signal transmission with excellent anti-jamming ability
- Built-in transient suppression protection
- BE8016/AR4 supports up to 4 channels

Specifications:

Frequency response	DC-8MHz
CMRR	60dB
Impedance	75Ω
Connection terminal	100Ω
Working Temperature	-22°F ~ 115°F
Operation Temperature	14°F ~ 122°F
Video System	NTSC, PAL, SECAM and CCIR
Dimension	105 x 58 x 29mm 204 x 103 x 49mm (4 channel)
Power Supply	12DC (Max: 200mA)
Wire Requirement	UTP Cat5 or above



Memo



BOLIDE
TECHNOLOGY GROUP



<http://www.bolideco.com>

468 South San Dimas Avenue, San Dimas CA 91773 | Tel: (909) 305-8889 | Fax: (909) 305-0999